

Figure 1. PWP System Assembly

PWP Mod. I System Assembly

FIG. NO.	INDEX NO.	PART NUMBER	INDENT	DESCRIPTION	QTY PER ASSY
1	0	AJXXXXN6961199AY099	1	PWP SYSTEM ASSEMBLY	
1	1	AJXXXXN6961300AY099	2	CMU ASSEMBLY (For Details, see Figure 2)	1
1	2	AJXXXXN6961300AY098	2	COOLING UNIT ASSEMBLY (For Details, see Figure 3)	1
1	3	AJXXXXN6961335AY099	2	CMU REAR ELECTRICAL ENCLOSURE ASSEMBLY (For Details, see Figure 4)	1
1	4	AJXXXXN6962338AY099	2	COOLING UNIT ELECTRICAL ENCLOSURE ASSEMBLY (For Details, see Figure 5)	1

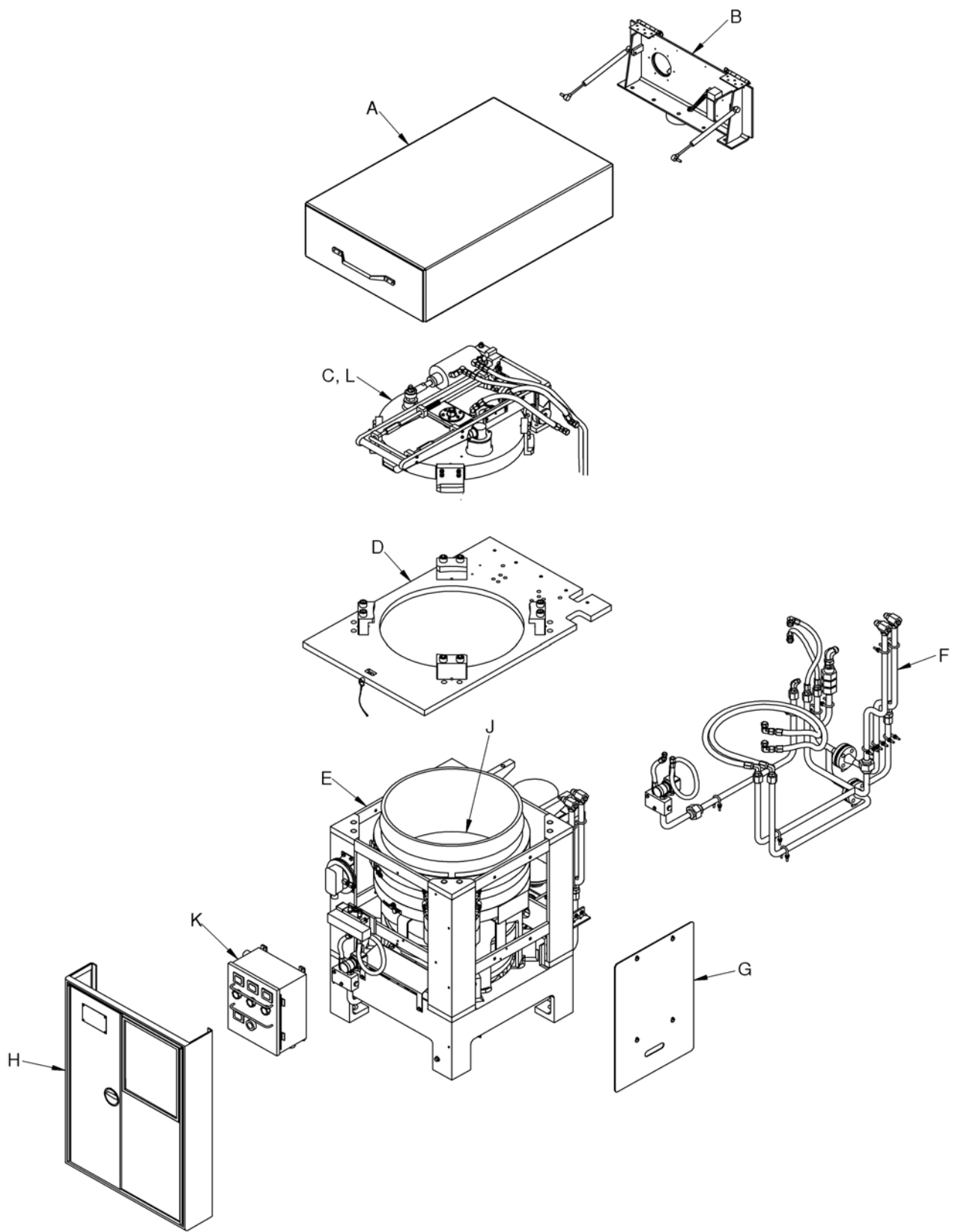


Figure 2. CMU Assembly.

CMU Assembly

FIG. NO.	INDEX NO.	PART NUMBER	INDENT	DESCRIPTION	QTY PER ASSY
2	0	AJXXXXN69613000AY099	1	CMU ASSEMBLY	
2	A			Safety Cover Subassembly (For details, see Figure 2A)	1
2	B			Safety Cover Bracket Subassembly (For details, see Figure 2B)	1
2	C			Door Subassembly (For details, see Figures 2C and 2L)	1
2	D			Top Plate Subassembly (For details, see Figure 2D)	1
2	E			Lower Frame and Guard Subassembly (For details, see Figure 2E)	1
2	F			Piping Subassembly (For details, see Figure 2F)	1
2	G			Side Cover Subassembly (For details, see Figure 2G)	1
2	H			Front Access Door Subassembly (For details, see Figure 2H)	1
2	J			Ram Subassembly (For details, see Figure 2J)	1
2	K			Front Electrical Enclosure Subassembly (For details, see Figures 3-1 and 3-2)	1

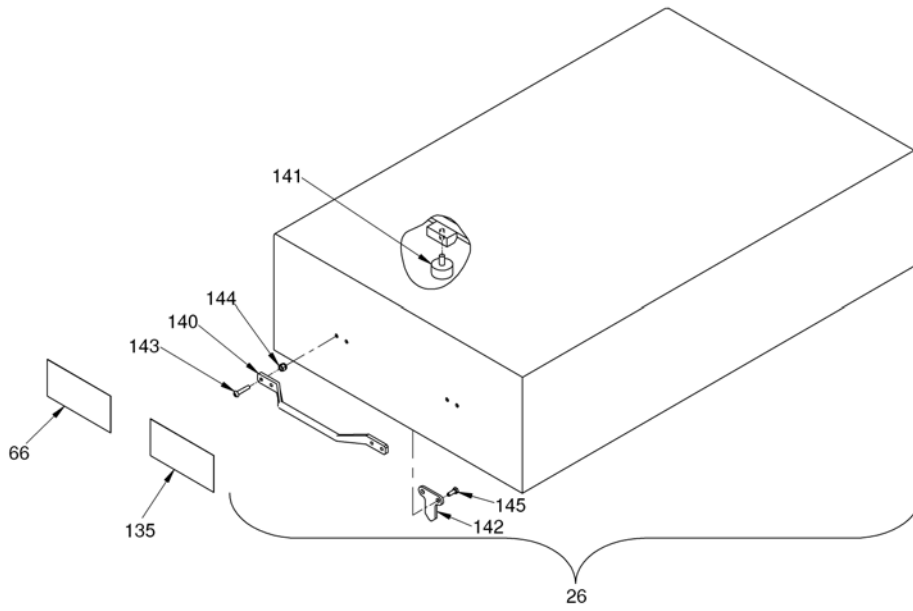


Figure 2A. CMU Safety Cover Subassembly

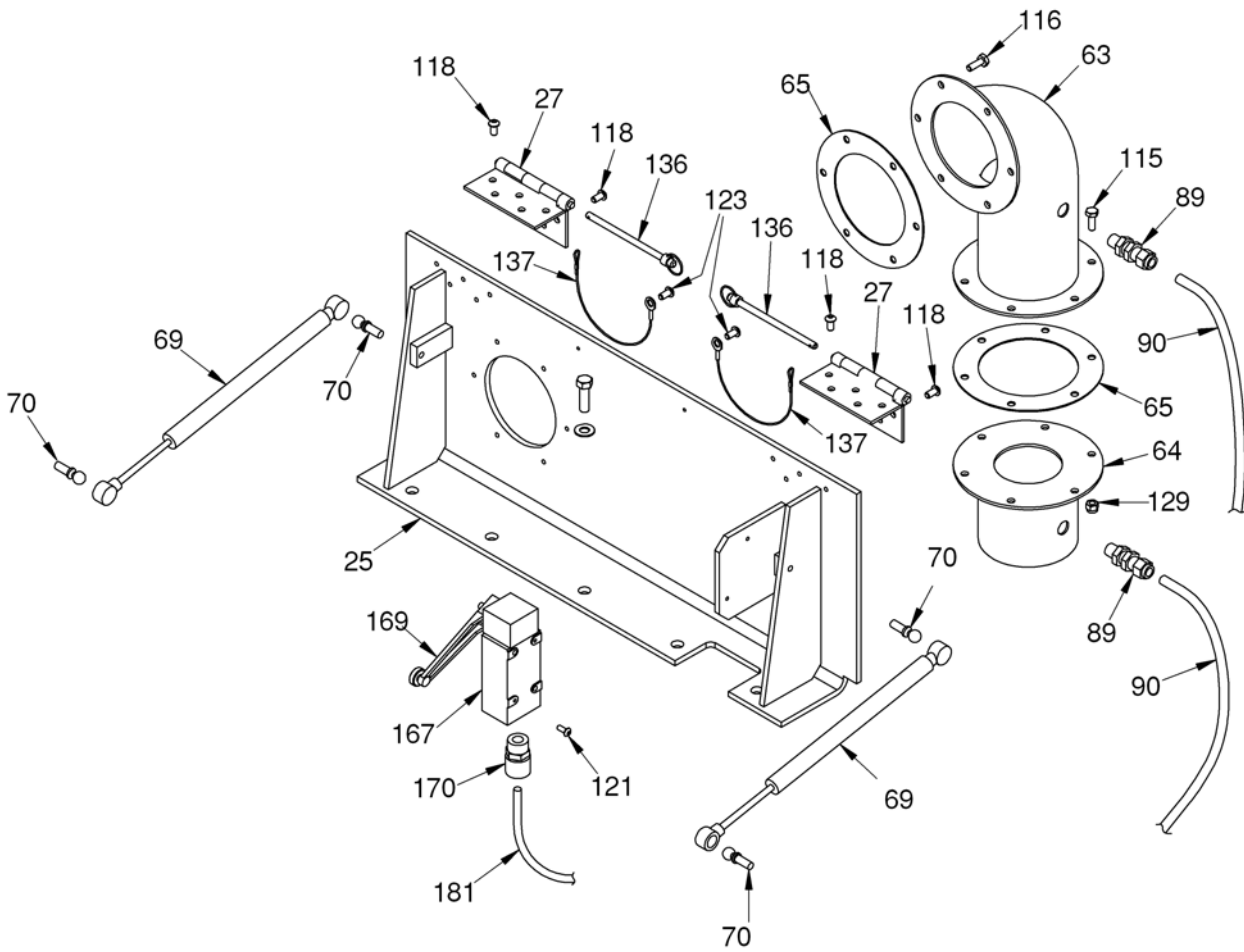


Figure 2B. CMU Safety Cover Bracket Subassembly.

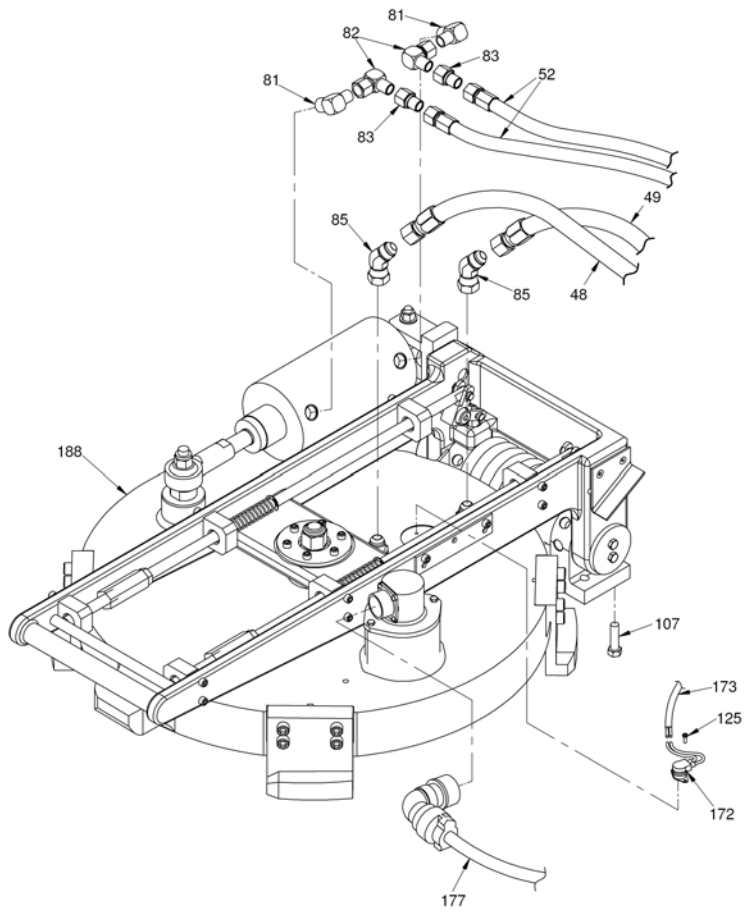


Figure 2C. CMU Door Subassembly.

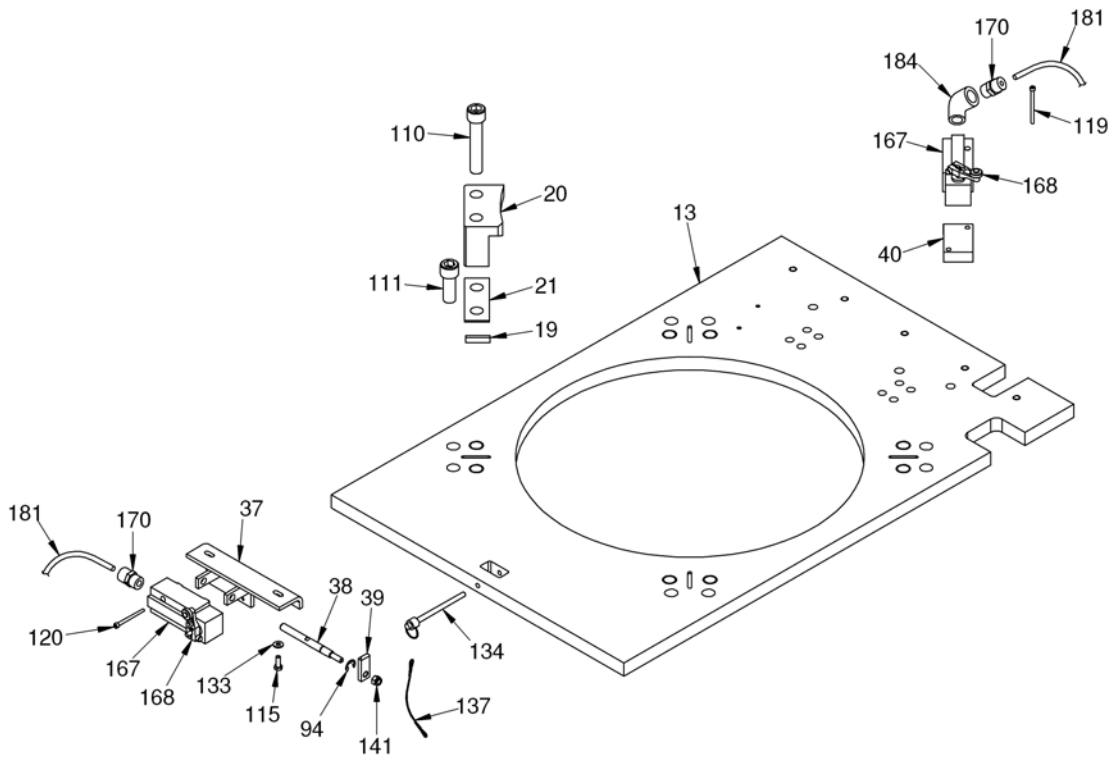


Figure 2D. CMU Top Plate Subassembly.

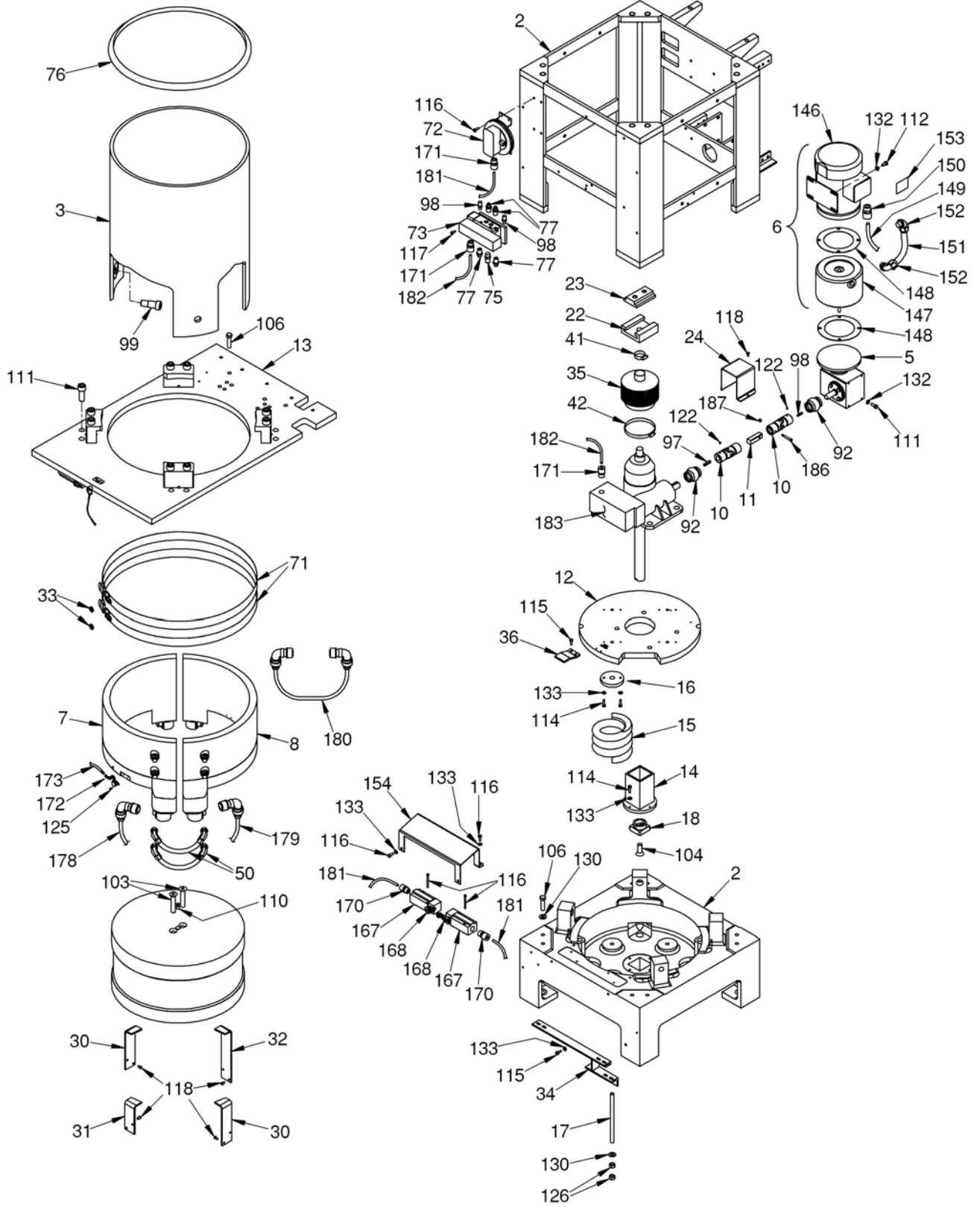


Figure 2E. CMU Lower Frame and Chamber Subassembly

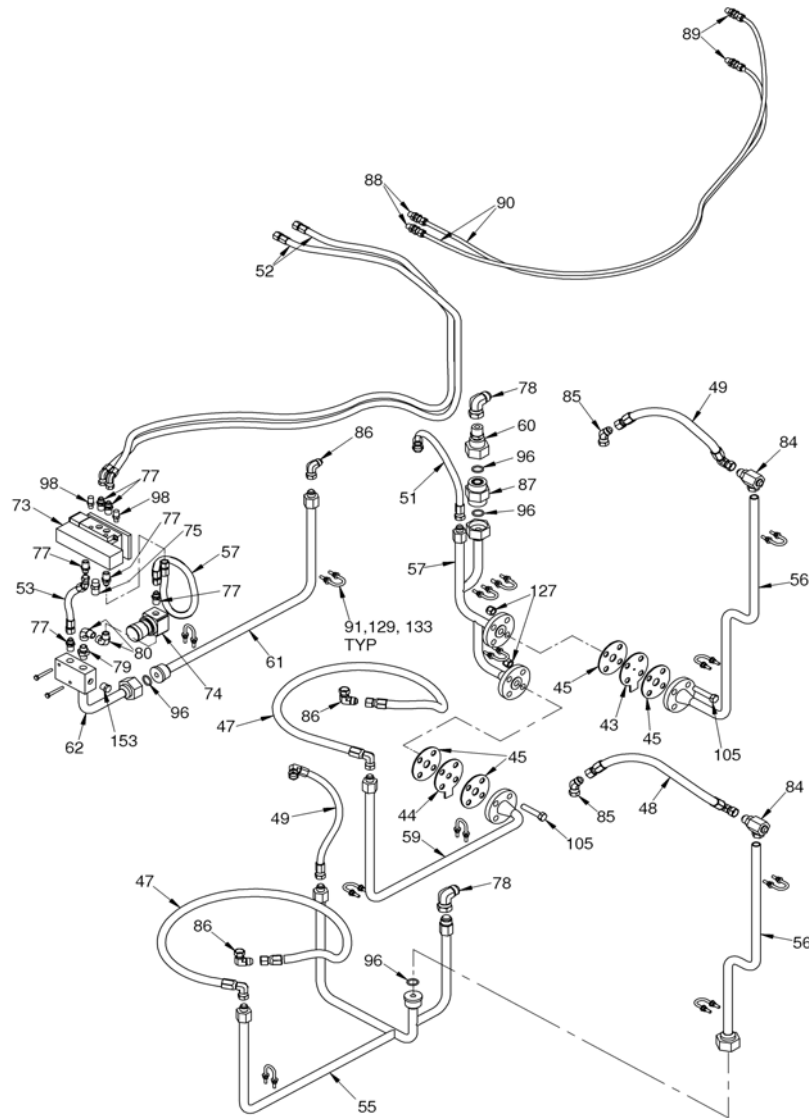


Figure 2F. CMU Piping Subassembly.

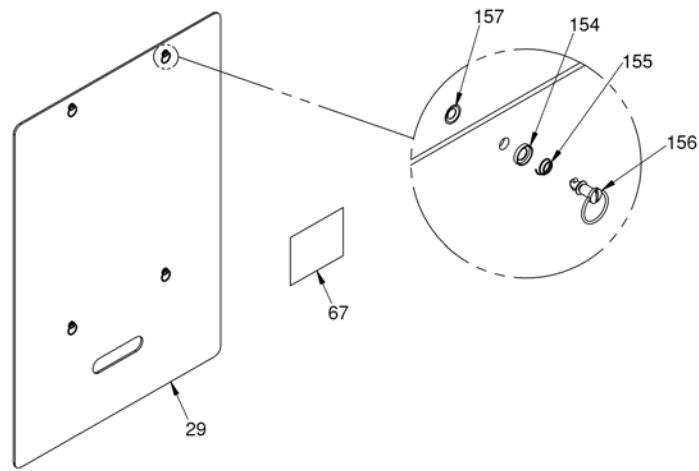


Figure 2G. CMU Side Cover Subassembly.

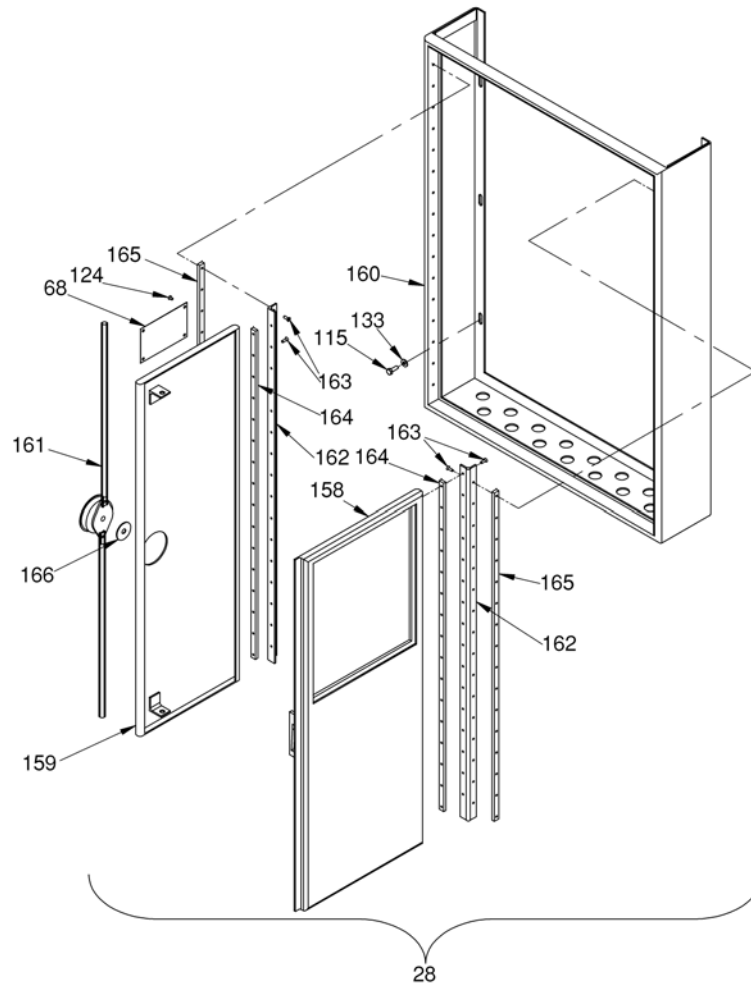


Figure 2H. CMU Front Access Door Subassembly.

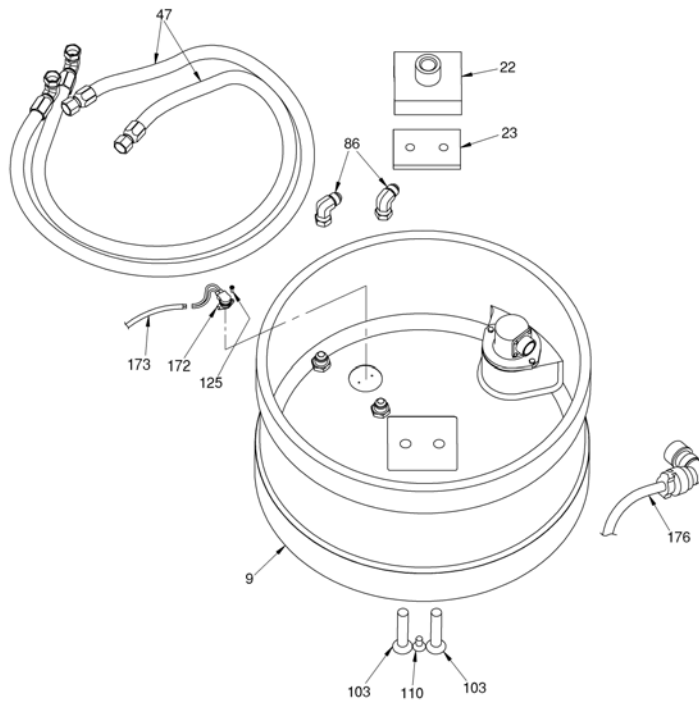


Figure 2J. CMU Lower Frame and Chamber Subassembly.

CMU Assembly

FIG. NO.	INDEX NO.	PART NUMBER	INDENT	DESCRIPTION	QTY PER ASSY
2	1	AJXXXXN6961241AY099	2	UPPER FRAME LEG ASSEMBLY	1
2	2	AJXXXXN6961242AY099	2	LOWER FRAME	1
2	3	AJXXXXN6961230PC002	2	CHAMBER	1
2	4	AJXXXXN6961244PC001	2	BALL SCREW ACTUATOR	1
2	5	AJXXXXN6961245PC001	2	GEARBOX	1
2	6	AJXXXXN6961256AY099	2	DRIVE MOTOR AND BRAKE ASSEMBLY	1
2	7	AJXXXXN6961301AY099	2	CHAMBER HEATER/COOLER ASSEMBLY, FRONT	1
2	8	AJXXXXN6961301AY098	2	CHAMBER HEATER/COOLER ASSEMBLY, REAR	1
2	9	AJXXXXN6961301AY096	2	RAM ASSEMBLY	1
2	10	AJXXXXN6961243PC001	2	ACTUATOR U-JOINT	2
2	11	AJXXXXN6961243PC019	2	SQUARE SHAFT	1
2	12	AJXXXXN6961243AY093	2	ACTUATOR PLATE	1
2	13	AJXXXXN6961241AY098	2	UPPER FRAME TOP PLATE ASSEMBLY	1
2	14	AJXXXXN6961243AY096	2	UPPER GUIDE TUBE	1
2	15	AJXXXXN6961243PC020	2	COMPRESSION SPRING	4
2	16	AJXXXXN6961243PC018	2	SPRING SPACER	4
2	17	AJXXXXN6961243PC019	2	ACTUATOR PLATE ROD	4
2	18	AJXXXXN6961243AY095	2	STOP NUT	1
2	19	AJXXXXN6961243PC030	2	KEY	4
2	20	AJXXXXN6961243PC029	2	LOCKING LUG	4
2	21	AJXXXXN6961243AY092	2	SHIM PACK	4
2	22	AJXXXXN6961243AY098	2	ACTUATOR ADAPTER	1
2	23	AJXXXXN6961243PC008	2	RAM TEE ADAPTER	1
2	24	AJXXXXN6961243PC035	2	SHAFT GUARD	1
2	25	AJXXXXN6961251AY099	2	SAFTEY COVER BRACKET ASSEMBLY	1
2	26	AJXXXXN6961250AY099	2	SAFTEY COVER ASSEMBLY	1
2	27	AJXXXXN6961250PC025	2	HINGE	2
2	28	AJXXXXN6961253AY099	2	FRONT ACCESS DOOR ASSEMBLY	1
2	29	AJXXXXN6961254AY099	2	SIDE COVER	2
2	30	AJXXXXN6961243PC044	2	SIDE HEATER SUPPORT BRACKET	2
2	31	AJXXXXN6961243PC045	2	FRONT HEATER SUPPORT BRACKET	1
2	32	AJXXXXN6961243PC046	2	REAR HEATER SUPPORT BRACKET	1
2	33	AJXXXXN6961200PC037	2	COMPRESSION SPRING	2
2	34	AJXXXXN6961243AY097	2	PIPE SUPPORT	1
2	35	AJXXXXN6961249PC001	2	BOOT, BALL SCREW ACTUATOR	1
2	36	AJXXXXN6961243PC024	2	PRESSURE LIMIT SWITCH PLATE	1
2	37	AJXXXXN6961243AY094	2	COVER LIMIT SWITCH BRACKET ASSEMBLY	1

FIG. NO.	INDEX NO.	PART NUMBER	INDENT	DESCRIPTION	QTY PER ASSY
2	38	AJXXXXN6961243PC036	2	COVER LIMIT SWITCH PLUNGER	1
2	39	AJXXXXN6961243PC025	2	COVER LIMIT SWITCH PLATE	1
2	40	AJXXXXN6961243PC043	2	DOOR LOCKED LIMIT SWITCH SPACER	1

2	41	AJXXXXN6961200PC045	2	HOSE CLAMP, Ø1.50	1
2	42	AJXXXXN6961200PC046	2	HOSE CLAMP, Ø4.50	1
2	43	AJXXXXN6961320PC006	2	ORIFICE PLATE, DOOR	1
2	44	AJXXXXN6961320PC006	2	SPACER PLATE, RAM	1
2	45	AJXXXXN6961320PC015	2	SPACER PLATE, RAM	1
2	46	AJXXXXN6961320PC007	2	GASKET	4
2	47	AJXXXXN6961200PC050	2	RAM SUPPLY AND RETURN HOSE ASSEMBLY	2
2	48	AJXXXXN6961200PC051	2	DOOR SUPPLY HOSE ASSEMBLY	1
2	49	AJXXXXN6961200PC052	2	DOOR RETURN AND CHAMBER SUPPLY HOSE ASSEMBLY	2
2	50	AJXXXXN6961200PC053	2	CHAMBER JUMPER HOSE ASSEMBLY	2
2	51	AJXXXXN6961200PC054	2	CHAMBER RETURN HOSE ASSEMBLY	1
2	52	AJXXXXN6961200PC055	2	AIR CYLINDER PISTON AND ROD END HOSE ASSEMBLY	2
2	53	AJXXXXN6961200PC056	2	H.P. AIR SUPPLY HOSE ASSEMBLY	1
2	54	AJXXXXN6961200PC057	2	L.P. AIR SUPPLY HOSE ASSEMBLY	1
2	55	AJXXXXN6961320AY094	2	RAM AND CHAMBER SUPPLY PIPING ASSEMBLY	1
2	56	AJXXXXN6961320AY095	2	DOOR SUPPLY PIPING ASSEMBLY	1
2	57	AJXXXXN6961320AY097	2	CHAMBER RETURN PIPING ASSEMBLY	1
2	58	AJXXXXN6961320AY099	2	DOOR RETURN PIPING ASSEMBLY	1
2	59	AJXXXXN6961320AY098	2	RAM RETURN PIPING ASSEMBLY	1
2	60	AJXXXXN6961320AY096	2	CHECK VALVE TAILPIECE ASSEMBLY	1
2	61	AJXXXXN6961320AY092	2	AIR SUPPLY PIPING ASSEMBLY	1
2	62	AJXXXXN6961320AY093	2	AIR MANIFOLD PIPING ASSEMBLY	1
2	63	AJXXXXN6961248AY099	2	EXHAUST DUCT ELBOW	1
2	64	AJXXXXN6961248AY098	2	EXHAUST DUCT CONNECTOR	1
2	65	AJXXXXN6961248PC006	2	GASKET	2
2	66	AJXXXXN6961302PC002	2	HAZARD PLATE	1
2	67	AJXXXXN6961302PC010	2	SIDE COVER LABEL	2
2	68	AJXXXXN6961302PC005	2	NAMEPLATE	1
2	69	AJXXXXN6961200PC072	2	GAS SPRING	2
2	70	AJXXXXN6961200PC073	2	BALL STUD	4
2	71	AJXXXXN6961200PC074	2	BAND CLAMP	2
2	72	AJXXXXN6961216PC001	2	AIR FLOW SWITCH (FS-1)	1
2	73	AJXXXXN6961214AY099	2	AIR CONTROL VALVE	1
2	74	AJXXXXN6961215PC001	2	REGULATOR, AIR LINE	1
2	75	AJXXXXN6961200PC078	2	EXHAUST PORT MUFFLER, 3/8 NPT	1
2	76	AJXXXXN6961232PC001	2	CHAMBER SEAL	1
2	77	AJXXXXN6961200PC080	2	STRAIGHT ADAPTER, -6 MALE 37° FLARE X 3/8 MALE NPT	6
2	78	AJXXXXN6961200PC081	2	90° ADAPTER, -12 FEMALE 37° FLARE X -12 FEMALE FLARE	2
2	79	AJXXXXN6961200PC082	2	STRAIGHT ADAPTER, 3/8 MALE NPT X 3/8 MALE NPT	1
2	80	AJXXXXN6961200PC083	2	STREET ELBOW, 3/8 NPT	2
2	81	AJXXXXN6961200PC084	2	90° ADAPTER, -6 MALE 37° FLARE X 3/8 MALE NPT	2
2	82	AJXXXXN6961200PC085	2	90° SWIVEL ADAPTER, -6 FEMALE 37° FLARE X -6 MALE 37° FLARE	2

2	83	AJXXXXN6961200PC086	2	RESTRICTOR, -6 FEMALE 37° FLARE X -6 MALE 37° FLARE	2
2	84	AJXXXXN6961200PC087	2	SWIVEL JOINT, ½-14NPSM X -8 MALE 37° FLARE	2
2	85	AJXXXXN6961200PC088	2	45° ADAPTER, -8 FEMALE 37° FLARE X -8 MALE 37° FLARE	2
2	86	AJXXXXN6961200PC089	2	90° ADAPTER, -8 FEMALE 37° FLARE X -8 MALE 37° FLARE	3
2	87	AJXXXXN6961200PC090	2	IN LINE CHECK VALVE, ½ NPS	1
2	88	AJXXXXN6961200PC091	2	MALE CONNECTOR, 3/8 TUBE X 1/8 NPT	2
2	89	AJXXXXN6961200PC092	2	BULKHEAD CONNECTOR, 3/8 TUBE X ¼ NPT	2
2	90	AJXXXXN6961200PC093	2	TUBING, HEAVY WALL, 3/8 O.D. X ¼ I.D., NYLON	12 FT
2	91	AJXXXXN6961200PC094	2	U-BOLT, ½" PIPE	12
2	92	AJXXXXN6961200PC095	2	PROTECTIVE BOOT, UNIVERSAL JOINT	2
2	93	AJXXXXN6961270AY099	2	FRONT ELECTRICAL ENCLOSURE ASSEMBLY	1
2	94	AJXXXXN6961200PC097	2	RETAINING RING, 'E' STYLE, Ø.438 SHAFT	1
2	95	AJXXXXN6961200PC098	2	EXHAUST PORT MUFFLER, ¼ NPT	2
2	96	AJXXXXN6961200PC106	2	O-RING, .859 I.D. X 1.137 O.D. X .139 WIDE	4
2	97	AJXXXXN6961200PC107	2	KEY .25 SQUARE X 1.25 LG	1
2	98	AJXXXXN6961200PC108	2	KEY .188 SQUARE X 1.00 LG	1
2	99	AJXXXXN6961200PC109	2	SHOULDER SCREW, SOCKET HEAD, Ø1.00 X 1.25 LG	4
2	100	AJXXXXN6961200PC110	2	CAP SCREW, SOCKET HEAD, .750-10UNC-2A X 4.00 LG	8
2	101	AJXXXXN6961200PC111	2	CAP SCREW, SOCKET HEAD, .750-10UNC-2A X 2.00 LG	8
2	102	AJXXXXN6961200PC112	2	CAP SCREW, SOCKET HEAD, .750-10UNC-2A X 1.50 LG	4
2	103	AJXXXXN6961200PC113	2	CAP SCREW, FLAT HEAD, .625-11UNC-2A X 3.25 LG	2
2	104	AJXXXXN6961200PC114	2	CAP SCREW, FLAT HEAD, .625-11UNC-2A X 1.75 LG	1
2	105	AJXXXXN6961200PC115	2	CAP SCREW, HEX HEAD, .500-13UNC-2A X 2.50 LG	8
2	106	AJXXXXN6961200PC117	2	CAP SCREW, HEX HEAD, .500-13UNC-2A X 2.00 LG	10
2	107	AJXXXXN6961200PC118	2	CAP SCREW, SOCKET HEAD, .500-13UNC-2A X 1.75 LG	8
2	108	AJXXXXN6961200PC119	2	CAP SCREW, HEX HEAD, .375-16UNC-2A X 1.25 LG	5
2	109	AJXXXXN6961200PC120	2	CAP SCREW, HEX HEAD, .375-16UNC-2A X 1.00 LG	1
2	110	AJXXXXN6961200PC121	2	CAP SCREW, FLAT HEAD, .375-16UNC-2A X .75 LG	1
2	111	AJXXXXN6961200PC122	2	CAP SCREW, HEX HEAD, .312-18UNC-2A X .88 LG	8
2	112	AJXXXXN6961200PC123	2	CAP SCREW, HEX HEAD,	4

				.312-18UNC-2A X .62 LG	
2	113	AJXXXXN6961200PC124	2	CAP SCREW, HEX HEAD, .250-20UNC-2A X 2.00 LG	2
2	114	AJXXXXN6961200PC125	2	CAP SCREW, HEX HEAD, .250-20UNC-2A X 1.00 LG	12

2	115	AJXXXXN6961200PC127	2	CAP SCREW, HEX HEAD, .250-20-2A X .75 LG	22
2	116	AJXXXXN6961200PC128	2	CAP SCREW, HEX HEAD, .250-20UNC-2A X .50 LG	14
2	117	AJXXXXN6961200PC129	2	CAP SCREW, FLAT HEAD, .250-20UNC-2A X .75 LG	2
2	118	AJXXXXN6961200PC130	2	CAP SCREW, BUTTON HEAD, .250-20UNC-2A X .50 LG	30
2	119	AJXXXXN6961200PC131	2	CAP SCREW, SOCKET HEAD, .190-24UNC-2A X 2.50 LG	2
2	120	AJXXXXN6961200PC132	2	CAP SCREW, SOCKET HEAD, .190-24UNC-2A X 1.75 LG	6
2	121	AJXXXXN6961200PC133	2	CAP SCREW, BUTTON HEAD, .190-32UNF-2A X .50 LG	2
2	122	AJXXXXN6961200PC134	2	SET SCREW, HEX SOCKET, .190-32UNF-2A X .25 LG	2
2	123	AJXXXXN6961200PC135	2	CAP SCREW, BUTTON HEAD, .190-24UNC-2A X .50 LG	2
2	124	AJXXXXN6961200PC136	2	SCREW, SELF-TAPPING PHILLIPS, TYPE F, .138-32 X .38 LG	4
2	125	AJXXXXN6961200PC137	2	MACHINE SCREW, PAN HEAD, .125-40UNC-2A X .38 LG	6
2	126	AJXXXXN6961200PC138	2	HEX NUT, .500-13UNC-2B	8
2	127	AJXXXXN6961200PC140	2	HEX NUT, LOCKING, .500-13UNC-2B	8
2	128	AJXXXXN6961200PC141	2	HEX NUT, LOCKING, .312-18UNC-2B	1
2	129	AJXXXXN6961200PC142	2	HEX NUT, LOCKING, .250-20UNC-2B	30
2	130	AJXXXXN6961200PC143	2	FLAT WASHER, Ø.500 NOMINAL	12
2	131	AJXXXXN6961200PC144	2	FLAT WASHER, Ø.375 NOMINAL	6
2	132	AJXXXXN6961200PC145	2	FLAT WASHER, Ø.312 NOMINAL	12
2	133	AJXXXXN6961200PC146	2	FLAT WASHER, Ø.250 NOMINAL	50
2	134	AJXXXXN6961200PC148	2	QUICK RELEASE PIN, Ø.312 X 4.00 LG	1
2	135	AJXXXXN6961200PC149	2	WARNING NAMEPLATE	1
2	136	AJXXXXN6961200PC150	2	QUICK RELEASE PIN, Ø.250 X 4.00 LG	2
2	137	AJXXXXN6961200PC151	2	LANYARD, 10" LG	3
2	138	AJXXXXN6961200PC152	2	PIPE PLUG, HEX HEAD, 3/8 NPT	1
2	139	AJXXXXN6961243PC047	2	LIMIT SWITCH GUARD	1
2	140	AJXXXXN6961250PC024	2	ASSIST HANDLE	1
2	141	AJXXXXN6961250PC031	2	BUMPER	2
2	142	AJXXXXN6961250PC036	2	TANG	1
2	143	AJXXXXN6961250PC020	2	MACHINE SCREW, OVAL HEAD, .250-20UNC-2A X 1.25 LG	4
2	144	AJXXXXN6961250PC021	2	HEX NUT, LOCKING, .250-20UNC-2B	4
2	145	AJXXXXN6961250PC039	2	CAP SCREW, SOCKET HEAD, .312-18UNC-2A X .50 LG	2
2	146	AJXXXXN6961256PC001	2	DRIVE MOTOR	1
2	147	AJXXXXN6961256PC002	2	MAGNETIC BRAKE	1
2	148	AJXXXXN6961256PC003	2	GASKET	1
2	149	AJXXXXN6961303AY092	2	MOTOR AND BRAKE CABLE ASSEMBLY (W101)	1
2	150	AJXXXXN6961256PC005	2	STUFFING TUBE	1
2	151	AJXXXXN6961256PC008	2	FLEXIBLE CONDUIT	1
2	152	AJXXXXN6961256PC009	2	CONDUIT CONNECTOR, 90°, 1/2"	2

2	153	AJXXXXN6961302PC027	2	NAMEPLATE	1
2	154	AJXXXXN6961254PC002	2	CUPPED WASHER	2
2	155	AJXXXXN6961254PC003	2	EJECTOR SPRING	2
2	156	AJXXXXN6961254PC004	2	STUD, QUARTER TURN	2
2	157	AJXXXXN6961254PC005	2	RETAINER	2
2	158	AJXXXXN6961253AY098	2	RIGHT SIDE DOOR ASSEMBLY	1
2	159	AJXXXXN6961253AY097	2	LEFT SIDE DOOR ASSEMBLY	1
2	160	AJXXXXN6961253AY096	2	ENCLOSURE ASSEMBLY	1
2	161	AJXXXXN6961253PC002	2	DEAD BOLT LATCH, 3 POINT	1
2	162	AJXXXXN6961253PC003	2	CONTINUOUS HINGE	2
2	163	AJXXXXN6961253PC008	2	MACHINE SCREW, FLAT HEAD 100°, .138-32UNC-2A X .50 LG	66
2	164	AJXXXXN6961253PC009	2	BAR, 32.25 LG	2
2	165	AJXXXXN6961253PC010	2	BAR, 31.00 LG	2
2	166	AJXXXXN6961253PC015	2	FENDER WASHER, 3/8 NOMINAL	1
2	167	AJXXXXN6961300PC001	2	LIMIT SWITCH	5
2	168	AJXXXXN6961300PC002	2	LIMIT SWITCH LEVER ARM, FIXED	4
2	169	AJXXXXN6961300PC003	2	LIMIT SWITCH LEVER ARM, ADJUSTABLE	1
2	170	AJXXXXN6961300PC004	2	STUFFING TUBE, ¾ NPT, .31-.50 I.D.	5
2	171	AJXXXXN6961300PC005	2	STUFFING TUBE, ½ NPT, .31-.38 I.D.	3
2	172	AJXXXXN6961300PC006	2	OVERTEMPERATURE SWITCH	3
2	173	AJXXXXN6961300PC007	2	RESISTANCE TEMP. DET. CABLE WITH ARMOR JACKET, 10 FT LG	1
2	174	AJXXXXN6961303AY099	2	MAIN SIGNAL CABLE ASSEMBLY (W109)	1
2	175	AJXXXXN6961303AY098	2	RTD SIGNAL CABLE ASSEMBLY (W108)	1
2	176	AJXXXXN6961303AY097	2	RAM CABLE ASSEMBLY (W103)	1
2	177	AJXXXXN6961303AY096	2	DOOR CABLE ASSEMBLY (W102)	1
2	178	AJXXXXN6961303AY095	2	CHAMBER CABLE ASSEMBLY (W104)	1
2	179	AJXXXXN6961303AY094	2	CHAMBER CABLE ASSEMBLY (W105)	1
2	180	AJXXXXN6961303AY085	2	SHORTED CHAMBER JUMPER CABLE ASSEMBLY (W123)	1
2	181	AJXXXXN6961300PC018	2	CABLE, BLACK JACKET, 2 CONDUCTOR, 69 FT	1
2	182	AJXXXXN6961300PC019	2	CABLE, BLACK JACKET, 3 CONDUCTOR, 13 FT	1
2	183	AJXXXXN6961244PC002	2	ROTARY LIMIT SWITCH	1
2	184	AJXXXXN6961300PC032	2	ELBOW, SHORT, 90°, 3/4 NPT	1
2	185	AJXXXXN6961303AY086	2	PUMP CABLE ASSEMBLY (W126)	1
2	186	AJXXXXN6961243PC004	2	SHOULDER SCREW, Ø.250 X 1.50 LG	1
2	187	AJXXXXN6961243PC005	2	HEX NUT, LOCKING, .190-24UNC-2B	1
2	188	AJXXXXN6961210AY099	2	DOOR ASSEMBLY	1

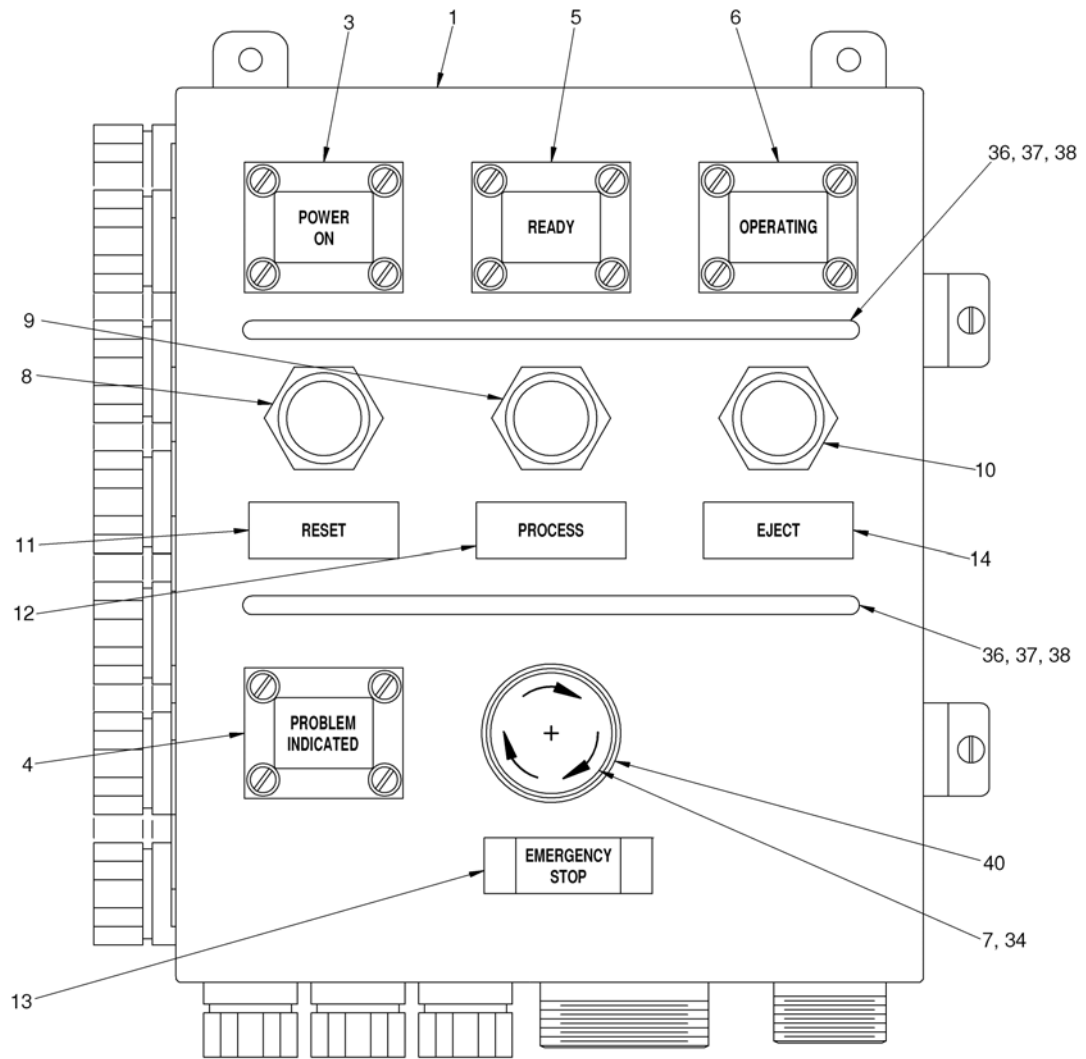


Figure 2K (Sheet 1 of 2). CMU Front Electrical Enclosure subassembly

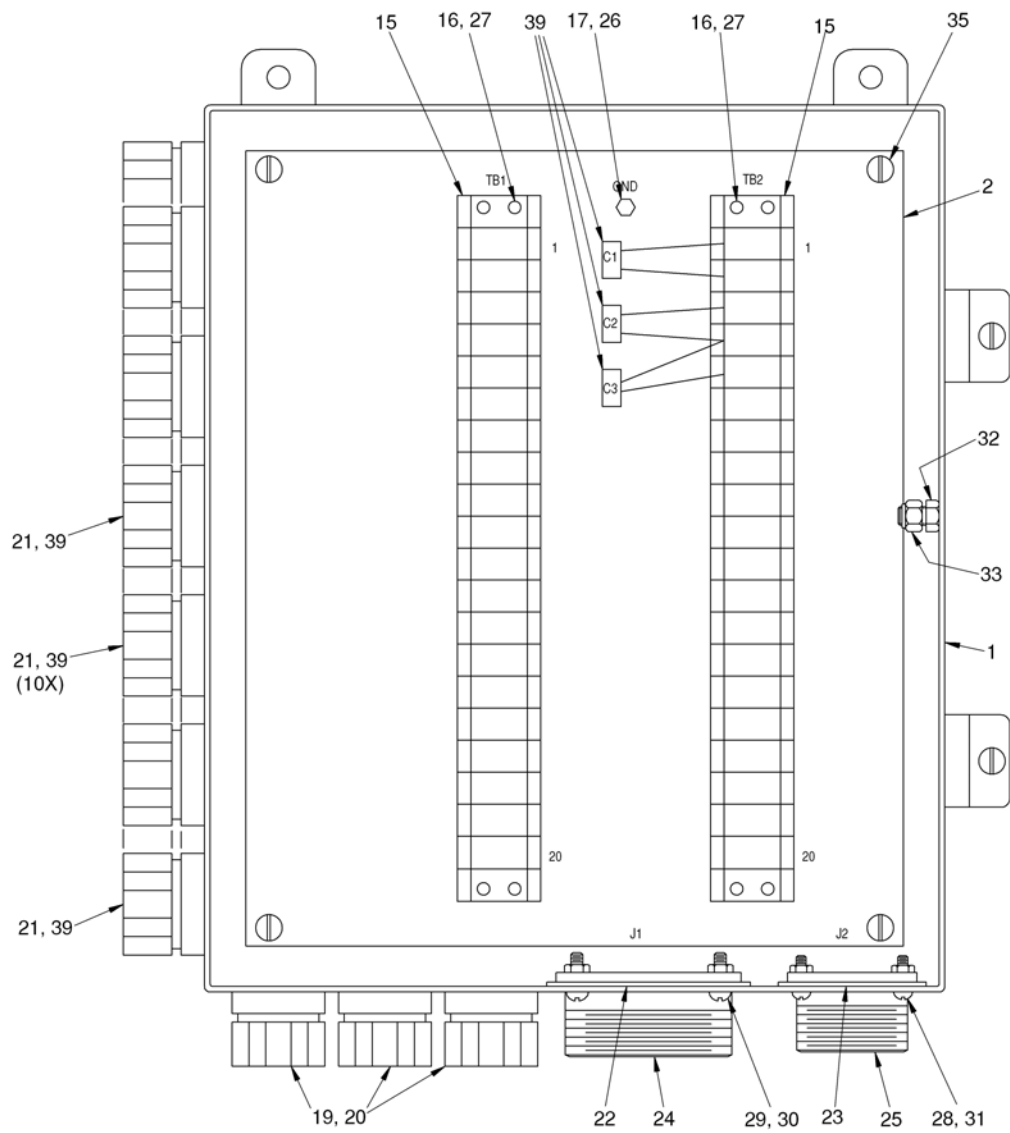


Figure 2K (Sheet 2 of 2). CMU Front Electrical Enclosure assembly

CMU Front Electrical Enclosure Assembly

FIG. NO.	INDEX NO.	PART NUMBER	INDENT	DESCRIPTION	QTY PER ASSY
2K	1	AJXXXXN6961270PC001	1	ENCLOSURE 12" HIGH X 10" WIDE X 6" DEEP	1
2K	2	AJXXXXN6961270PC002	2	PANEL	1
2K	3	AJXXXXN6961270PC003	2	INDICATOR, POWER ON	1
2K	4	AJXXXXN6961270PC004	2	INDICATOR, PROBLEM INDICATED	1
2K	5	AJXXXXN6961270PC005	2	INDICATOR, READY	1
2K	6	AJXXXXN6961270PC006	2	INDICATOR, OPERATING	1
2K	7	AJXXXXN6961270PC007	2	PUSHBUTTON, MOMENTARY CONTACT, MUSHROOM HEAD, RED	1
2K	8	AJXXXXN6961270PC008	2	PUSHBUTTON, MOMENTARY CONTACT, FLUSH HEAD, GREEN	1
2K	9	AJXXXXN6961270PC009	2	PUSHBUTTON, MOMENTARY CONTACT, FLUSH HEAD, ORANGE	1
2K	10	AJXXXXN6961270PC010	2	PUSHBUTTON, MOMENTARY CONTACT, FLUSH HEAD, BLACK	1
2K	11	AJXXXXN6961270PC012	2	NAMEPLATE, RESET	1
2K	12	AJXXXXN6961270PC013	2	NAMEPLATE, PROCESS	1
2K	13	AJXXXXN6961270PC014	2	NAMEPLATE, EMERGENCY STOP	1
2K	14	AJXXXXN6961270PC015	2	NAMEPLATE, EJECT	1
2K	15	AJXXXXN6961270PC017	2	TERMINAL BOARD, SCREW TYPE, 20 TERMINAL	2
2K	16	AJXXXXN6961270PC018	2	INSERT, .164-32UNC-2B	8
2K	17	AJXXXXN6961270PC019	2	INSERT, .250-20UNC-2B	1
2K	18	AJXXXXN6961270PC020	2	PACKING ASSEMBLY, SIZE 2B	10
2K	19	AJXXXXN6961270PC022	2	STUFFING TUBE, SIZE 1, STRAIGHT	3
2K	20	AJXXXXN6961270PC023	2	PACKING ASSEMBLY, SIZE 1B1	3
2K	21	AJXXXXN6961270PC024	2	STUFFING TUBE, SIZE 2, STRAIGHT	12
2K	22	AJXXXXN6961270PC026	2	RECEPTACLE GASKET	1
2K	23	AJXXXXN6961270PC027	2	RECEPTACLE GASKET	1
2K	24	AJXXXXN6961270PC028	2	RECEPTACLE CONNECTOR, SHELL SIZE 36-15P	1
2K	25	AJXXXXN6961270PC029	2	RECEPTACLE CONNECTOR, SHELL SIZE 24-5	1
2K	26	AJXXXXN6961270PC030	2	CAP SCREW, HEX HEAD, .250-20UNC-2A X .62 LG	1
2K	27	AJXXXXN6961270PC031	2	MACHINE SCREW, ROUND HEAD, .164-32UNC-2A X .75 LG	8
2K	28	AJXXXXN6961270PC032	2	MACHINE SCREW, ROUND HEAD, .138-32UNC-2A X .50 LG	4
2K	29	AJXXXXN6961270PC033	2	MACHINE SCREW, ROUND HEAD, .164-32UNC-2A X .50 LG	4
2K	30	AJXXXXN6961270PC034	2	HEX NUT, LOCKING, .164-32UNC-2B	4

FIG. NO.	INDEX NO.	PART NUMBER	INDENT	DESCRIPTION	QTY PER ASSY
2K	31	AJXXXXN6961270PC035	2	HEX NUT, LOCKING, .138-32UNC-2B	4

2K	32	AJXXXXN6961270PC036	2	CAP SCREW, HEX HEAD, .250-20UNC-2A X .38 LG	1
2K	33	AJXXXXN6961270PC037	2	HEX NUT, LOCKING, .250-20UNC-2B	1
2K	34	AJXXXXN6961270PC040	2	CONTACT BLOCK, 2 N.O.	1
2K	35	AJXXXXN6961270PC051	2	MACHINE SCREW, PAN HEAD SLOTTED, .190-32UNF-2A X .38 LG	4
2K	36	AJXXXXN6961270PC053	2	HANDLE GUARD	2
2K	37	AJXXXXN6961270PC054	2	CAP SCREW, SOCKET HEAD, .190-32UNF-2A X .50 LG	4
2K	38	AJXXXXN6961270PC055	2	SEALING WASHER, .190 SIZE	4
2K	39	AJXXXXN6961297PC057	2	PACKING ASSEMBLY, SIZE 2D	2
2K	40	AJXXXXN6961297PC001	2	GUARD, EMERGENCY STOP	1
2K	41	AJXXXXN6961270PC062	2	CAPACITOR, SUPPRESSOR, RADIAL, .1Uf, 250 VAC	3

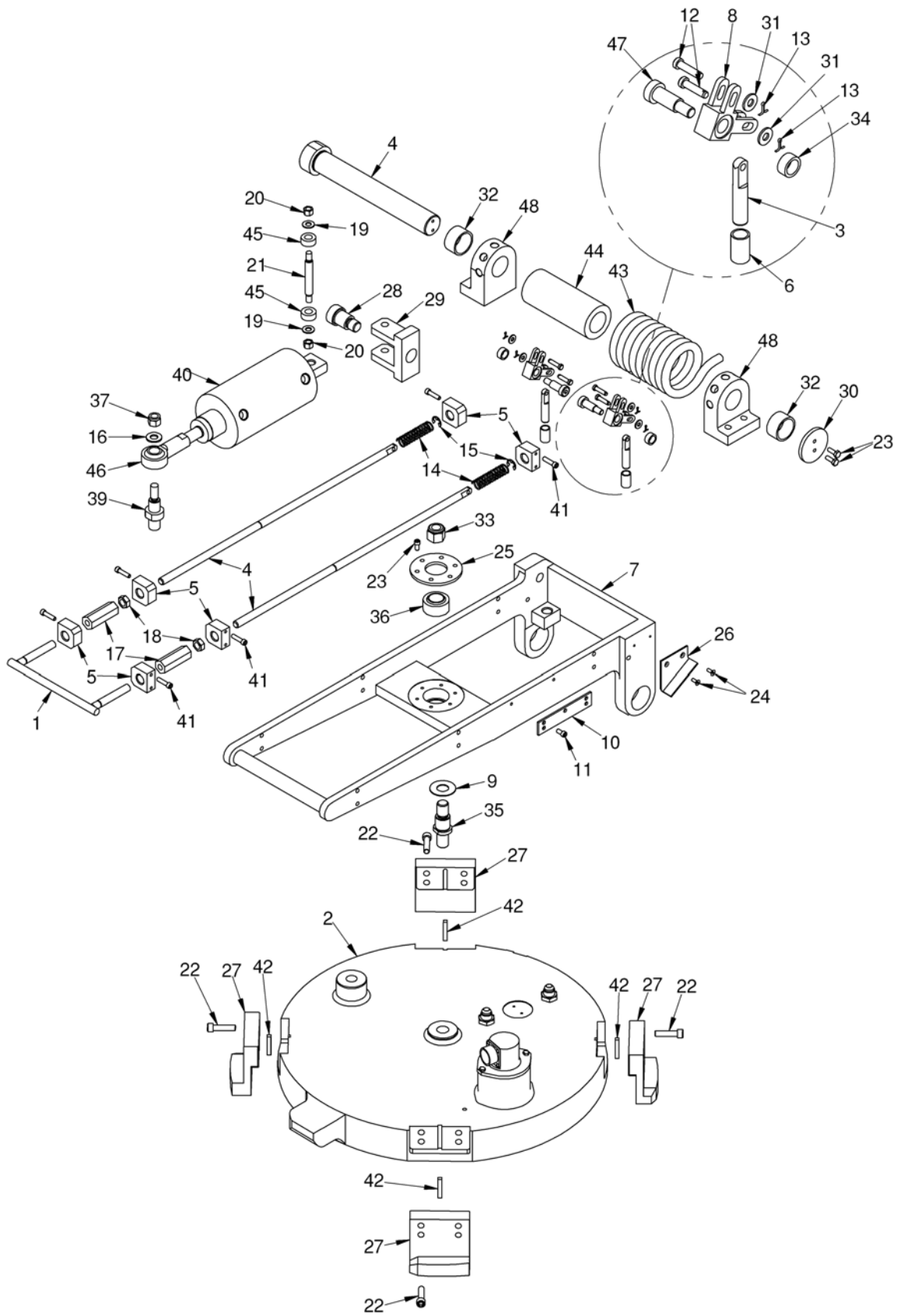


Figure 2L. CMU Door Assembly.

CMU Door Assembly.

FIG. NO.	INDEX NO.	PART NUMBER	INDENT	DESCRIPTION	QTY PER ASSY
2L	1	AJXXXXN6961301AY097	1	DOOR ASSEMBLY	1
2L	2	AJXXXXN6961210PC002	2	DETENT ROD	2
2L	3	AJXXXXN6961210PC003	2	BEARING ROD	2
2L	4	AJXXXXN6961210PC005	2	HINGE PIN	1
2L	5	AJXXXXN6961210PC006	2	BEARING BLOCK	6
2L	6	AJXXXXN6961210PC007	2	BEARING, LUBED FOR LIFE, .503-.504 I.D. X .6265-.6275 O.D. X 1.00 LG, SINTERED BRONZE	2
2L	7	AJXXXXN6961210PC008	2	HINGE BRACKET	1
2L	8	AJXXXXN6961210PC009	2	CRANK ARM	2
2L	9	AJXXXXN6961210PC010	2	DOOR PIVOT STUD SPACER	5
2L	10	AJXXXXN6961210PC011	2	RTD CABLE GUARD	1
2L	11	AJXXXXN6961210PC012	2	CAP SCREW, SOCKET HEAD, .250-20UNC-2A X .50 LG	2
2L	12	AJXXXXN6961210PC017	2	CLEVIS PIN, Ø.250 X 1.00 LG	4
2L	13	AJXXXXN6961210PC018	2	COTTER PIN, Ø.062 X .50 LG	4
2L	14	AJXXXXN6961210PC019	2	COMPRESSION SPRING	2
2L	15	AJXXXXN6961210PC020	2	SNAP RING, E-TYPE, Ø.500 SHAFT	2
2L	16	AJXXXXN6961210PC021	2	FLAT WASHER, Ø.500 NOMINAL	1
2L	17	AJXXXXN6961210PC022	2	TURNBUCKLE NUT	2
2L	18	AJXXXXN6961210PC023	2	JAM NUT, .500-13UNC-2B	2
2L	19	AJXXXXN6961210PC024	2	FLAT WASHER, Ø.375 NOMINAL	2
2L	20	AJXXXXN6961210PC025	2	HEX NUT, .375-16UNC-2B	2
2L	21	AJXXXXN6961210PC026	2	CYLINDER BRACKET PIN	1
2L	22	AJXXXXN6961210PC027	2	CAP SCREW, SOCKET HEAD, .375-16UNC-2A X 1.50 LG	16
2L	23	AJXXXXN6961210PC028	2	CAP SCREW, HEX HEAD, .250-20UNC-2A X .75 LG	8
2L	24	AJXXXXN6961210PC029	2	MACHINE SCREW, FLAT HEAD, 82°, .190-24UNC-2A X .50 LG	4
2L	25	AJXXXXN6961210PC031	2	BEARING RETAINER	1
2L	26	AJXXXXN6961210PC032	2	DOOR CLOSED SWITCH FLAG	1
2L	27	AJXXXXN6961210PC033	2	PIVOT LUG	4
2L	28	AJXXXXN6961210PC034	2	SHOULDER SCREW, Ø1.00 X 1.00 LG	1
2L	29	AJXXXXN6961210PC035	2	CYLINDER BRACKET	1
2L	30	AJXXXXN6961210PC037	2	HINGE PIN RETAINER	1
2L	31	AJXXXXN6961210PC038	2	FLAT WASHER, Ø.250 NOMINAL	4
2L	32	AJXXXXN6961210PC039	2	BEARING, LUBED FOR LIFE, 1.502-.501 I.D. X 1.752-1.751 O.D. X .927-.937 LG, SINTERED BRONZE	2

FIG. NO.	INDEX NO.	PART NUMBER	INDENT	DESCRIPTION	QTY PER ASSY
2L	33	AJXXXXN6961210PC040	2	HEX NUT, LOCKING, .750-10UNC-B	1
2L	34	AJXXXXN6961210PC041	2	SPACER	2
2L	35	AJXXXXN6961210PC042	2	DOOR PIVOT STUD	1
2L	36	AJXXXXN6961210PC043	2	SPHERICAL BEARING, 1.000 BORE, .750 O.D., .797 OUTER RACE WIDTH, 1.000 BALL WIDTH	1

2L	37	AJXXXXN6961210PC044	2	HEX NUT, LOCKING, .500-13UNC-2B	1
2L	38	AJXXXXN6961210PC045	2	DOOR LOCKED SWITCH FLAG	1
2L	39	AJXXXXN6961210PC046	2	CYLINDER PIVOT STUD	1
2L	40	AJXXXXN6961212PC001	2	PNEUMATIC CYLINDER	1
2L	41	AJXXXXN6961210PC048	2	CAP SCREW, SOCKET HEAD, .250-20UNC-2A X 1.00 LG	12
2L	42	AJXXXXN6961210PC051	2	KEY, .250 SQUARE X 1.50 LG	4
2L	43	AJXXXXN6961210PC057	2	TORSION SPRING	1
2L	44	AJXXXXN6961210PC058	2	SPRING SPACER	1
2L	45	AJXXXXN6961210PC060	2	SPACER	2
2L	46	AJXXXXN6961210PC061	2	BALL JOINT, ROD END	1
2L	47	AJXXXXN6961210PC062	2	SHOULDER SCREW, Ø.50 X 1.00 LG	2
2L	48	AJXXXXN6961210PC065	2	BRACKET	2
2L	49	AJXXXXN6961210PC070	2	JAM NUT, .750-16UNF-2B	1

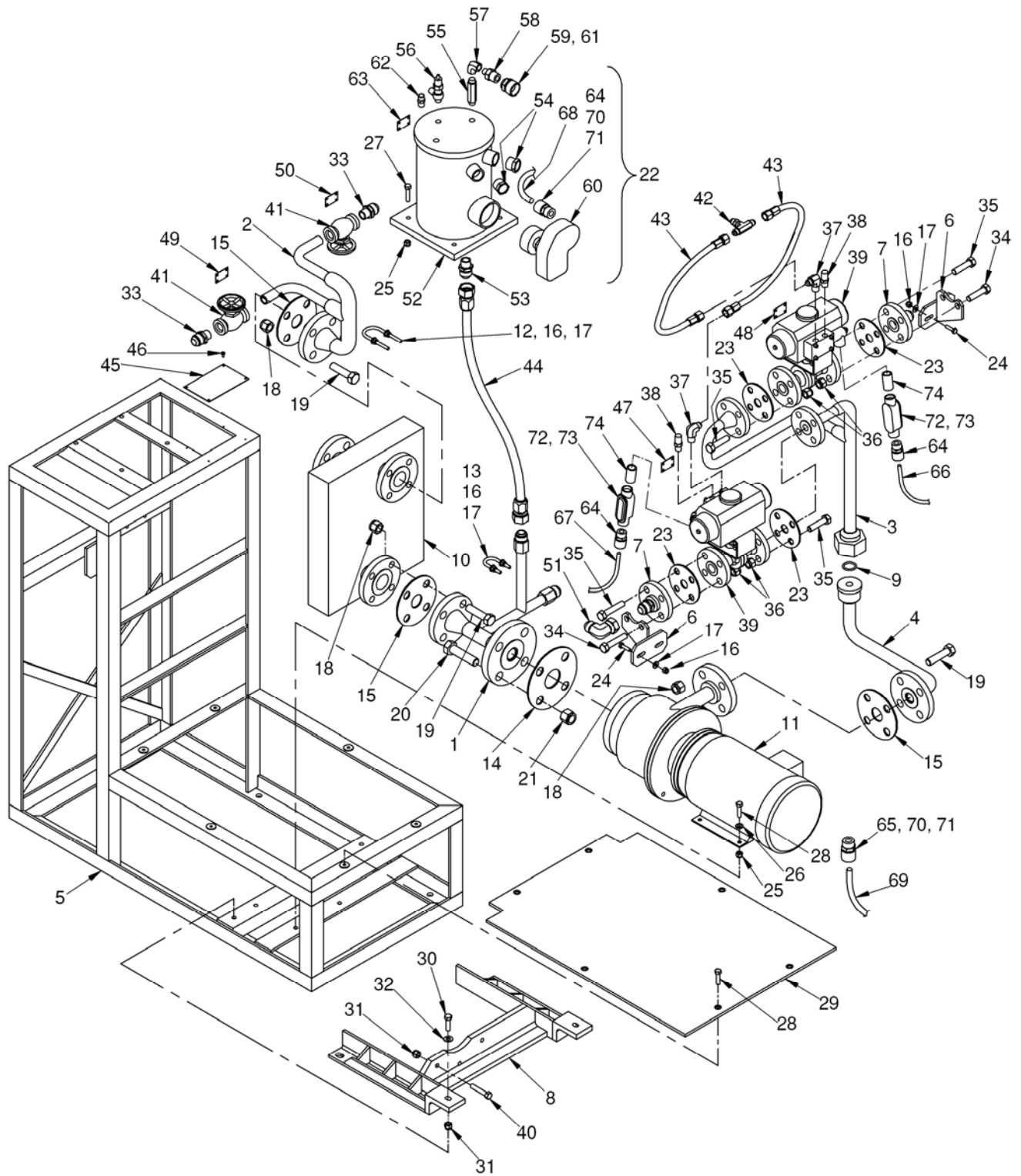


Figure 3. Cooling Unit Assembly.

Cooling Unit Assembly

FIG. NO.	INDEX NO.	PART NUMBER	INDENT	DESCRIPTION	QTY PER ASSY
3	1	AJXXXXN6961310AY098	2	SUCTION PIPING ASSEMBLY	1
3	2	AJXXXXN6961310AY097	2	CMU RETURN PIPING ASSEMBLY	1
3	3	AJXXXXN6961310AY096	2	UPPER DISCHARGE PIPING ASSEMBLY	1
3	4	AJXXXXN6961310AY095	2	LOWER DISCHARGE PIPING ASSEMBLY	1
3	5	AJXXXXN6961310AY094	2	FRAME ASSEMBLY	1
3	6	AJXXXXN6961310AY093	2	VALVE SUPPORT ASSEMBLY	2
3	7	AJXXXXN6961310AY092	2	VALVE FLANGE ASSEMBLY	2
3	8	AJXXXXN6961310AY091	2	PUMP SUPPORT BRACKET	1
3	9	AJXXXXN6961310PC015	2	O-RING, .984 I.D. X 1.262 O.D. X .139 WIDE	1
3	10	AJXXXXN6961311PC001	2	HEAT EXCHANGER	1
3	11	AJXXXXN6961312PC001	2	CENTRIFUGAL PUMP WITH MOTOR	1
3	12	AJXXXXN6961310PC030	2	U-BOLT, 1" PIPE SIZE	1
3	13	AJXXXXN6961310PC031	2	U-BOLT, ½" PIPE SIZE	1
3	14	AJXXXXN6961310PC032	2	GASKET, PIPE FLANGE, 1-1/2" PIPE SIZE, 300# X .12 THK	1
3	15	AJXXXXN6961310PC033	2	GASKET, PIPE FLANGE, 1" PIPE SIZE, 300# X .12 THK	3
3	16	AJXXXXN6961310PC034	2	HEX NUT, LOCKING, .250-20UNC-2B	8
3	17	AJXXXXN6961310PC035	2	WASHER, FLAT, Ø.250 NOMINAL	8
3	18	AJXXXXN6961310PC036	2	HEX NUT, LOCKING, .625-11UNC-2B	12
3	19	AJXXXXN6961310PC037	2	CAP SCREW, HEX HEAD, .625-11UNC-2A X 2.50 LG	12
3	20	AJXXXXN6961310PC046	2	CAP SCREW, HEX HEAD, .750-10UNC-2A X 3.00 LG	4
3	21	AJXXXXN6961310PC047	2	HEX NUT, LOCKING, .750-10UNC-2B	4
3	22	AJXXXXN6961313AY099	2	EXPANSION RESERVOIR	1
3	23	AJXXXXN6961310PC051	2	GASKET, PIPE FLANGE, ½" PIPE SIZE, 300# X .12 THK	4
3	24	AJXXXXN6961310PC055	2	CAP SCREW, HEX HEAD, .250-20UNC-2A X 1.00 LG	4
3	25	AJXXXXN6961310PC056	2	HEX NUT, LOCKING, .312-18UNC-2B	8
3	26	AJXXXXN6961310PC057	2	WASHER, FLAT, Ø.312 NOMINAL	4
3	27	AJXXXXN6961310PC058	2	CAP SCREW, HEX HEAD, .312-18UNC-2A X 1.50 LG	4
3	28	AJXXXXN6961310PC059	2	CAP SCREW, HEX HEAD, .312-18UNC-2A X 1.25 LG	10
3	29	AJXXXXN6961310PC060	2	PLATFORM, DIAMOND TREAD	1
3	30	AJXXXXN6961310PC061	2	CAP SCREW, HEX HEAD, .375-16UNC-2A X 1.50 LG	2
3	31	AJXXXXN6961310PC062	2	HEX NUT, LOCKING, .375-16UNC-2B	5

3	32	AJXXXXN6961310PC063	2	WASHER, FLAT, Ø.375 NOMINAL	2
3	33	AJXXXXN6961310PC065	2	STRAIGHT ADAPTER, -12 SIZE MALE 37° FLARE X ½" NPT MALE PIPE	2
3	34	AJXXXXN6961310PC066	2	CAP SCREW, HEX HEAD, .500-13UNC-2A X 2.50 LG	4
3	35	AJXXXXN6961310PC067	2	CAP SCREW, HEX HEAD, .500-13UNC-2A X 2.00 LG	12
3	36	AJXXXXN6961310PC068	2	HEX NUT, LOCKING, .500-13UNC-2B	16
3	37	AJXXXXN6961310PC069	2	90° ADAPTER, -6 SIZE MALE 37° FLARE X ¼" NPT MALE PIPE	2
3	38	AJXXXXN6961310PC070	2	EXHAUST PORT MUFFLER, ¼" NPT	2
3	39	AJXXXXN6961322AY099	2	COOLING WATER ISOLATION VALVE ASSEMBLY	2
3	40	AJXXXXN6961310PC072	2	CAP SCREW, HEX HEAD, .375-16UNC-2A X 2.00 LG	3
3	41	AJXXXXN6961310PC073	2	BALL VALVE, FULL PORT, ½" NPT FEMALE ENDS, ROUND HANDLE	2
3	42	AJXXXXN6961310PC074	2	TEE ADAPTER, -6 SIZE MALE 37° FLARE RUN X -6 SIZE MALE 37° FLARE BULKHEAD BRANCH	1
3	43	AJXXXXN6961310PC074	2	COOLING WATER VALVE AIR HOSE ASSEMBLY	2
3	44	AJXXXXN6961310PC075	2	EXPANSION RESERVOIR HOSE ASSEMBLY	1
3	45	AJXXXXN6961302PC004	2	NAMEPLATE	1
3	46	AJXXXXN6961310PC078	2	MACHINE SCREW, PAN HEAD PHILLIPS, .138-32UNC-2A X .38 LG	4
3	47	AJXXXXN6961302PC019	2	NAMEPLATE	1
3	48	AJXXXXN6961302PC020	2	NAMEPLATE	1
3	49	AJXXXXN6961302PC021	2	NAMEPLATE	1
3	50	AJXXXXN6961302PC022	2	NAMEPLATE	1
3	51	AJXXXXN6961310PC085	2	90° ADAPTER, -12 SIZE FEMALE 37° SWIVEL FLARE X -12 SIZE MALE 37° FLARE	1
3	52	AJXXXXN6961313AY098	2	EXPANSION RESERVOIR WELDMENT	1
3	53	AJXXXXN6961313PC005	2	STRAIGHT ADAPTER, -12 SIZE MALE 37° FLARE X ½" NPT MALE PIPE	1
3	54	AJXXXXN6961313PC006	2	SIGHT WINDOW PLUG, 3/4 " MALE NPT	2
3	55	AJXXXXN6961313PC007	2	CHECK VALVE, ¼" NPT	1
3	56	AJXXXXN6961313PC008	2	RELIEF VALVE, ¼" NPT	1
3	57	AJXXXXN6961313PC009	2	90° ADAPTER, ¼" FEMALE NPT X ¼" FEMALE NPT	1
3	58	AJXXXXN6961313PC010	2	STRAIGHT ADAPTER, ½" MALE NPT X ¼" MALE NPT	1
3	59	AJXXXXN6961313PC011	2	ADAPTER, ½" FEMALE NPT X FEMALE GARDEN HOSE (.75NH)	1
3	60	AJXXXXN6961313PC014	2	LIQUID LEVEL SWITCH	1
3	61	AJXXXXN6961313PC015	2	HOSE WASHER	1
3	62	AJXXXXN6961313PC016	2	PURGE VALVE, ¼" MALE NPT	1
3	63	AJXXXXN6961302PC026	2	NAMEPLATE, RELIEF VALVE	1
3	64	AJXXXXN6961300PC005	2	STUFFING TUBE WITH BUSHING, ½" NPT, .31-.38 I.D.	3
3	65	AJXXXXN6961300PC021	2	STUFFING TUBE WITH BUSHING, ½"	1

				NPT, .50-.62 I.D.	
3	66	AJXXXXN6961303AY089	2	CABLE ASSEMBLY, W127, SOLENOID VALVE L1(A)	1
3	67	AJXXXXN6961303AY088	2	CABLE ASSEMBLY, W128, SOLENOID VALVE L1(B)	1
3	68	AJXXXXN6961303AY087	2	CABLE ASSEMBLY, W131, EXPANSION RESERVOIR LEVEL SWITCH	1
3	69	AJXXXXN6961303AY086	2	CABLE ASSEMBLY, W126, PUMP MOTER	1
3	70	AJXXXXN6961300PC033	2	SEALING WASHER, ½" NPT WITH O-RING	2
3	71	AJXXXXN6961300PC034	2	LOCKING NUT, ½" NPT	2
3	72	AJXXXXN6961300PC039	2	CONDUIT BOX, "C" STYLE, ½" NPT	2
3	73	AJXXXXN6961300PC043	2	CONDUIT BOX COVER WITH GASKET	2
3	74	AJXXXXN6961300PC044	2	NIPPLE, ½" NPT X 1.50 LG	2

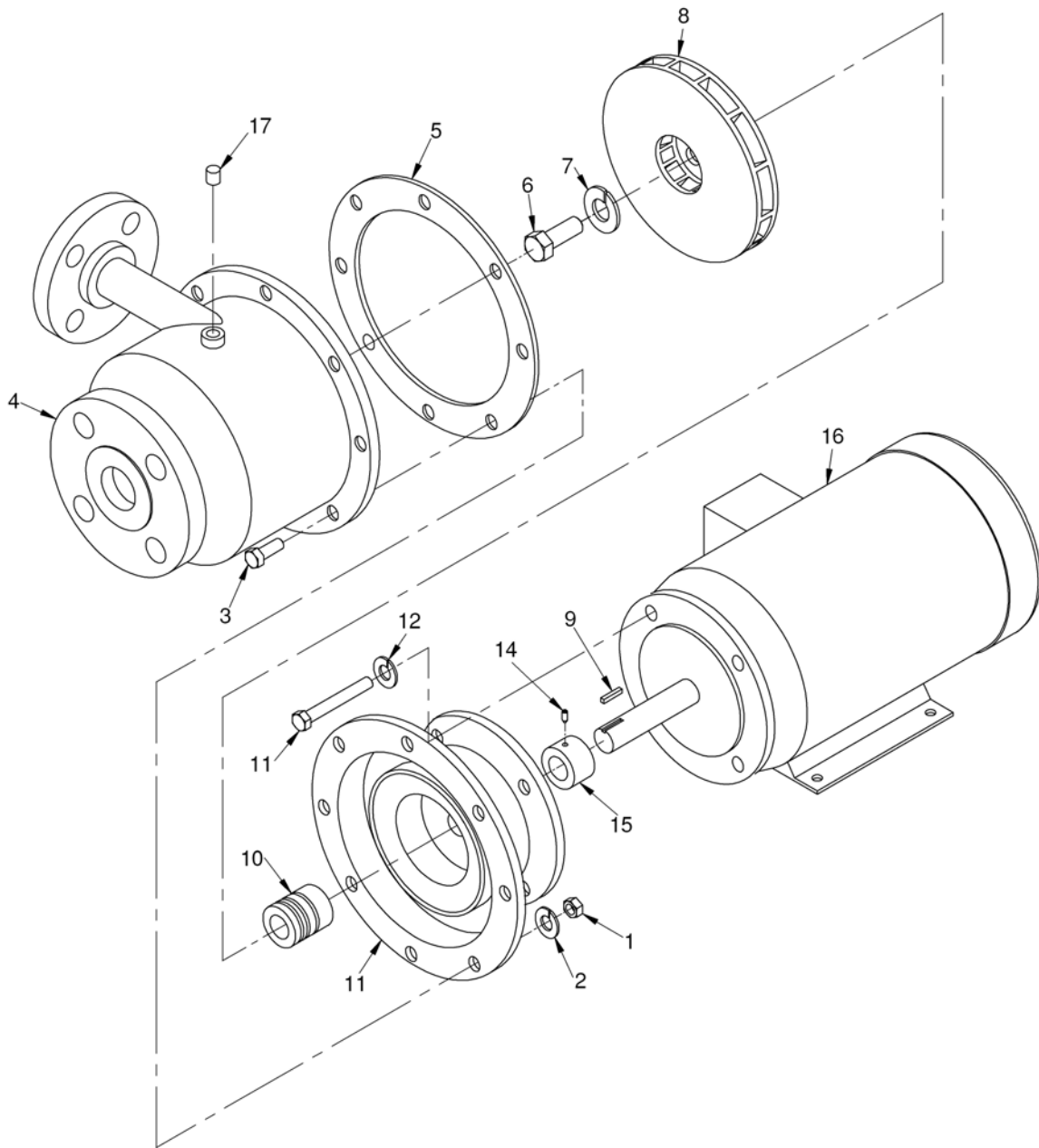


Figure 3-A. Cooling Unit Pump Assembly.

Cooling Unit Pump Assembly

FIG. NO.	INDEX NO.	PART NUMBER	INDENT	DESCRIPTION	QTY PER ASSY
3-A	1	AJXXXXN6961312PC001	2	HEX NUT, .375-16UNC-2B	8
3-A	2	AJXXXXN6961312PC002	2	WASHER, LOCK, Ø.375 NOMINAL	8
3-A	3	AJXXXXN6961312PC003	2	CAP SCREW, HEX HEAD, .375-16UNC-2A X .75 LG	8
3-A	4	AJXXXXN6961312PC004	2	HOUSING ASSEMBLY	1
3-A	5	AJXXXXN6961312PC005	2	HOUSING GASKET	1
3-A	6	AJXXXXN6961312PC006	2	BOLT, IMPELLER	1
3-A	7	AJXXXXN6961312PC007	2	WASHER, LOCK, Ø.500 NOMINAL	1
3-A	8	AJXXXXN6961312PC008	2	IMPELLER	1
3-A	9	AJXXXXN6961312PC009	2	KEY, .25 SQUARE X 1.12 LONG	1
3-A	10	AJXXXXN6961312PC010	2	MECHANICAL SEAL	1
3-A	11	AJXXXXN6961312PC011	2	CAP SCREW, HEX HEAD, .375-16UNC-2A X 3.50 LG	4
3-A	12	AJXXXXN6961312PC012	2	WASHER, LOCK, Ø.375 NOMINAL	4
3-A	13	AJXXXXN6961312PC013	2	ADAPTER ASSEMBLY	1
3-A	14	AJXXXXN6961312PC014	2	SCREW, SET, .375-16UNC-3A X .38 LG	1
3-A	15	AJXXXXN6961312PC015	2	SHAFT SLEEVE	1
3-A	16	AJXXXXN6961312PC016	2	MOTOR, 2 H.P., 3450 RPM, 460V, 3 PHASE, 60 CYCLE, 143TC FRAME	1
3-A	17	AJXXXXN6961312PC017	2	PLUG, 1/8" NPT	1

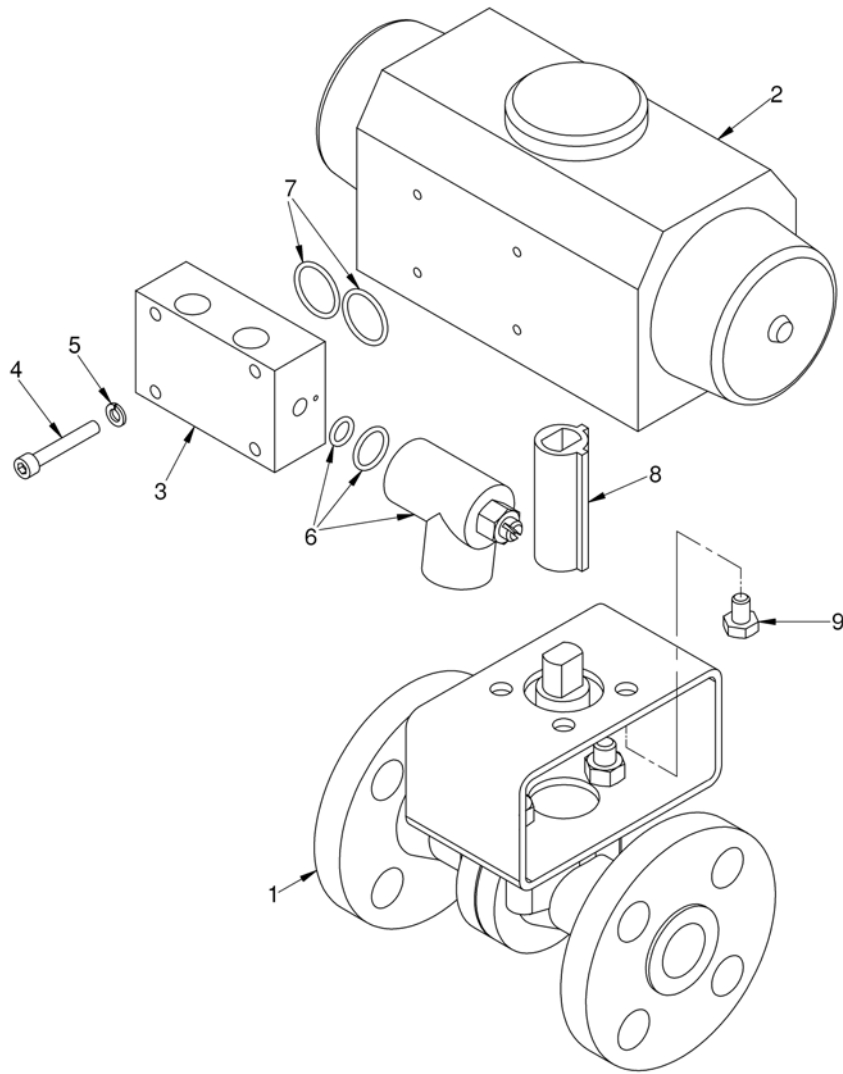


Figure 3-B. Cooling Unit Valve Assembly.

Cooling Unit Valve Assembly

FIG. NO.	INDEX NO.	PART NUMBER	INDENT	DESCRIPTION	QTY PER ASSY
3-B	1	AJXXXXN6961322AY098	2	VALVE AND ADAPTER ASSEMBLY	1
3-B	2	AJXXXXN6961322PC002	2	PNEUMATIC ROTARY ACTUATOR	1
3-B	3	AJXXXXN6961312PC022	2	MANIFOLD	1
3-B	4	AJXXXXN6961312PC023	2	CAP SCREW, SOCKET HEAD, .190-32UNF-2A X 1.25 LG	4
3-B	5	AJXXXXN6961312PC024	2	WASHER, LOCK, Ø.190 NOMINAL	4
3-B	6	AJXXXXN6961312PC025	2	SOLINOID VALVE, MANIFOLD MOUNT, WITH O-RINGS	1

3-B	7	AJXXXXN6961312PC026	2	O-RING, .727 I.D. X .069 WIDE	2
3-B	8	AJXXXXN6961312PC027	2	KEYED ADAPTER	1
3-B	9	AJXXXXN6961312PC008	2	CAP SCREW, HEX HEAD, .250-20UNC-2A X .38 LG	4

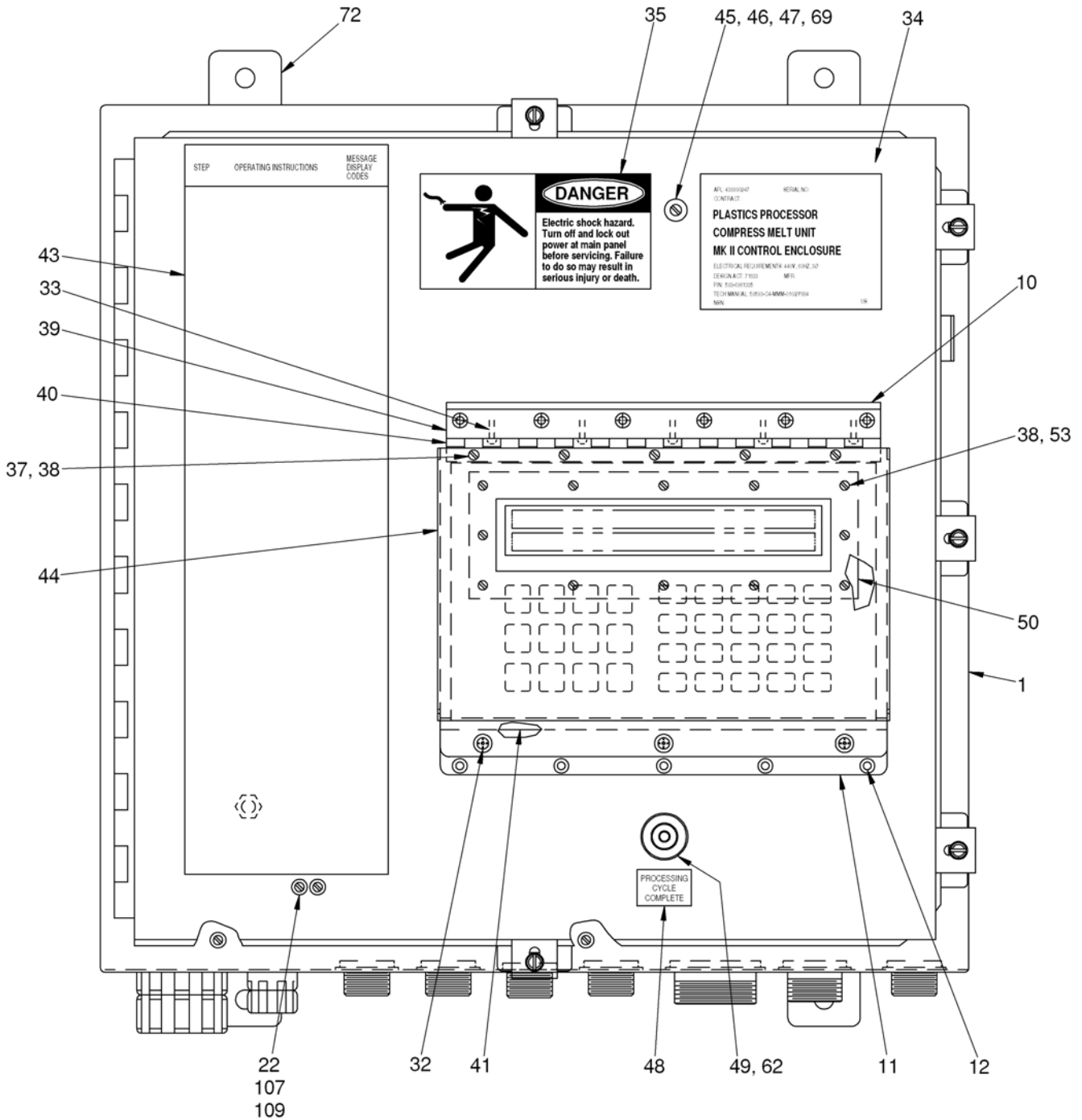


Figure 4. CMU Rear Electrical Enclosure Assembly (sheet 1 of 3)

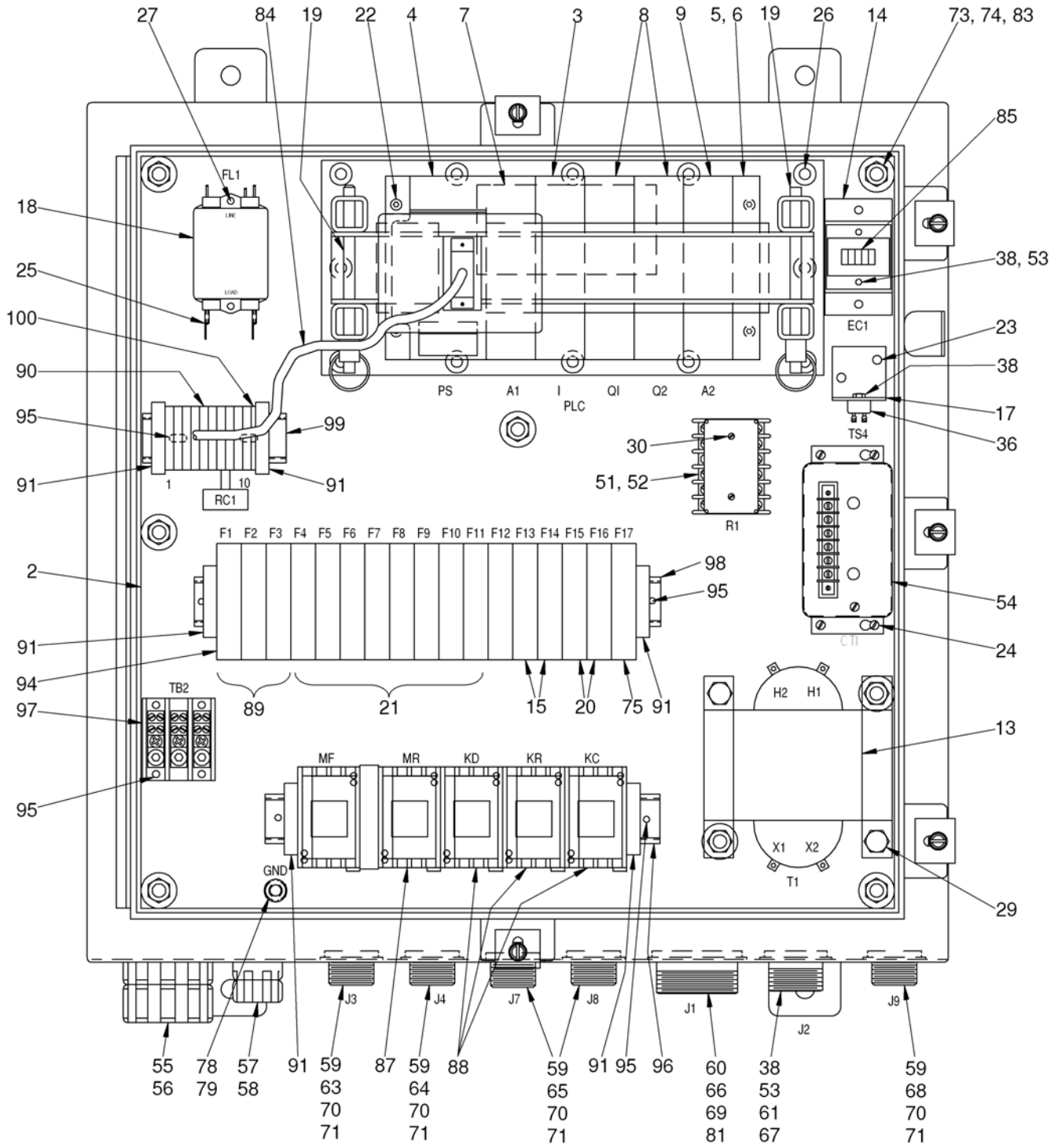


Figure 4. CMU Rear Electrical Enclosure Assembly (Sheet 2 of 3)

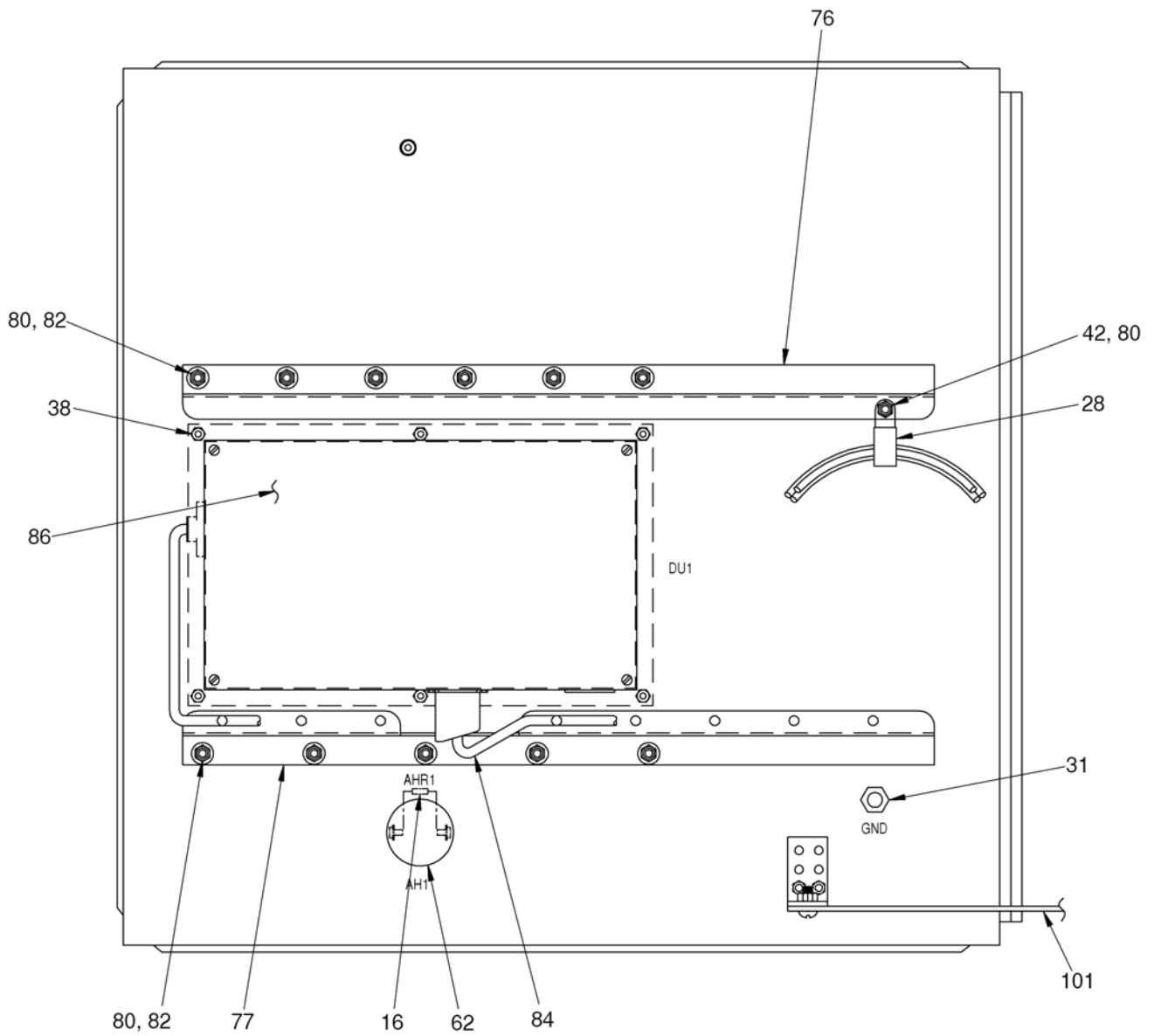


Figure 4. CMU Rear Electrical Enclosure Assembly (sheet 3 of 3)

CMU Rear Electrical Enclosure Assembly

FIG. NO.	INDEX NO.	PART NUMBER	INDENT	DESCRIPTION	QTY PER ASSY
4	1	AJXXXXN6961335PC001	2	ENCLOSURE, 24" X 24" X 8"	1
4	2	AJXXXXN6961335PC002	2	PANEL, 21" X 21" X .38 THK	1
4	3	AJXXXXN6961335PC003	2	PLC INPUT MODULE	1
4	4	AJXXXXN6961335PC004	2	PLC POWER SUPPLY	1
4	5	AJXXXXN6961335PC005	2	PLC BASEPLATE	1
4	6	AJXXXXN6961335PC006	2	PLC PROM, INTEGRATED CIRCUIT, 28 PIN	1
4	7	AJXXXXN6961335PC007	2	PLC RTD MODULE	1
4	8	AJXXXXN6961335PC008	2	PLC OUTPUT MODULE	1
4	9	AJXXXXN6961335PC009	2	PLC ANALOG INPUT MODULE	1
4	10	AJXXXXN6961335PC010	2	GASKET, CLOSED CELL FOAM, 12.25 X 1.25 X .06 THK	1
4	11	AJXXXXN6961335PC012	2	HOLD DOWN GASKET, CLOSED CELL FOAM, 1.12 ID X 1.75 OD X .06	1
4	12	AJXXXXN6961335PC013	2	MACHINE SCREW, FLAT HEAD, .190-32UNF-2A X 1.00 LG	11
4	13	AJXXXXN6961335PC014	2	TRANSFORMER	1
4	14	AJXXXXN6961335PC015	2	EVENT COUNTER BRACKET	1
4	15	AJXXXXN6961335PC016	2	FUSE, MIDGET, 500 VOLTS, 2 AMP, TIME DELAY	2
4	16	AJXXXXN6961335PC017	2	RESISTOR, 1 MEGAOHM, ½ W, 10% TOLERANCE	1
4	17	AJXXXXN6961335PC018	2	OVER TEMPERATURE BRACKET	1
4	18	AJXXXXN6961335PC020	2	AC POWER LINE FILTER	1
4	19	AJXXXXN6961335PC021	2	QUICK RELEASE PIN, Ø.312 X 4.25 LG, RING STYLE	2
4	20	AJXXXXN6961335PC022	2	FUSE, MIDGET, 500 VOLTS, 4 AMP, TIME DELAY	2
4	21	AJXXXXN6961335PC023	2	FUSE, MIDGET, 600 VOLTS, 20 FAST ACTING	8
4	22	AJXXXXN6961335PC029	2	MACHINE SCREW, ROUND HEAD, .190-32UNF-2A X .62 LG	8
4	23	AJXXXXN6961335PC030	2	MACHINE SCREW, ROUND HEAD, .190-32UNF-2A X .38 LG	4
4	24	AJXXXXN6961335PC031	2	MACHINE SCREW, ROUND HEAD, .164-32UNC-2A X .50 LG	8
4	25	AJXXXXN6961335PC033	2	MACHINE SCREW, FLAT HEAD 82°, .312-18UNC-2A X .62 LG	12
4	26	AJXXXXN6961335PC043	2	ADAPTER, 2 FEMALE DISCONNECTS X 1 MALE DISCONNECT	1
4	27	AJXXXXN6961335PC046	2	MACHINE SCREW, ROUND HEAD, .138-32UNC-2A X .38 LG	2
4	28	AJXXXXN6961335PC047	2	LOOP TYPE CLAMP, Ø.50-.75	1
4	29	AJXXXXN6961335PC049	2	CAP SCREW, HEX HEAD, .375-16UNC-2A X .50 LG	2
4	30	AJXXXXN6961335PC052	2	MACHINE SCREW, ROUND HEAD, .138-32UNC-2A X .75 LG	2
4	31	AJXXXXN6961335PC054	2	CAP SCREW, HEX HEAD, .375-16UNC-2A X .75 LG	1

FIG. NO.	INDEX NO.	PART NUMBER	INDENT	DESCRIPTION	QTY PER ASSY
4	32	AJXXXXN6961335PC055	2	RETRACTABLE SCREW FASTENER, .190-32UNF THREADS, .40 O.D. WASHER	3
4	33	AJXXXXN6961335PC056	2	MACHINE SCREW, ROUND HEAD, .138-32UNC-2A X .38 LG	1
4	34	AJXXXXN6961302PC024	2	NAMEPLATE, MK II COMPRESS MELT UNIT CONTROL ENCLOSURE	1

4	35	AJXXXXN6961302PC001	2	ELECTRICAL HAZARD PLATE	1
4	36	AJXXXXN6961335PC059	2	OVER TEMPERATURE SWITCH, N.C., OPENS AT 60° C	1
4	37	AJXXXXN6961335PC060	2	MACHINE SCREW, FLAT HEAD 82°, .138-32UNC-2A X .38 LG	5
4	38	AJXXXXN6961335PC061	2	HEX NUT, LOCKING, .138-32UNF-2B	30
4	39	AJXXXXN6961335PC062	2	BAR	1
4	40	AJXXXXN6961335PC063	2	HINGE, CONTINUOUS	1
4	41	AJXXXXN6961335PC064	2	HOLD DOWN BAR	1
4	42	AJXXXXN6961335PC065	2	MACHINE SCREW, SOCKET HEAD, .190-32UNF-2A X .50 LG	1
4	43	AJXXXXN6961302PC006	2	OPERATING INSTRUCTIONS	1
4	44	AJXXXXN6961335PC067	2	DISPLAY UNIT COVER	1
4	45	AJXXXXN6961335PC068	2	SEALING WASHER, Ø.164 NOMINAL	1
4	46	AJXXXXN6961335PC069	2	MACHINE SCREW, ROUND HEAD, .164-32UNC-2A X .75 LG	1
4	47	AJXXXXN6961335PC070	2	BUMPER Ø.62 X .62 LG	1
4	48	AJXXXXN6961302PC017	2	NAMEPLATE, PROCESSING CYCLE COMPLETE	1
4	49	AJXXXXN6961335PC072	2	GASKET, PROCESSING CYCLE COMPLETE ALARM, 1.12 I.D. X 1.75 O.D. X .06 THK	1
4	50	AJXXXXN6961335PC073	2	LENS, DISPLAY UNIT	1
4	51	AJXXXXN6961279PC001	2	RELAY, DPDT, 115 VAC, 10 AMP	1
4	52	AJXXXXN6961335PC075	2	RELAY SOCKET, PLUG IN	1
4	53	AJXXXXN6961335PC076	2	MACHINE SCREW, ROUND HEAD, .138-32UNC-2A X .50 LG	18
4	54	AJXXXXN6961285PC001	2	CURRENT TRANSDUCER	1
4	55	AJXXXXN6961335PC078	2	STUFFING TUBE, SIZE 5 STRAIGHT	1
4	56	AJXXXXN6961335PC079	2	PACKING ASSEMBLY, SIZE 5C	1
4	57	AJXXXXN6961335PC080	2	STUFFING TUBE, SIZE 2 STRAIGHT	2
4	58	AJXXXXN6961335PC081	2	PLUG, SIZE 2	2
4	59	AJXXXXN6961335PC082	2	GASKET, RECEPTACLE, CLOSED CELL FOAM, 1.50 X 1.50 X .06 THK	5
4	60	AJXXXXN6961335PC083	2	GASKET, RECEPTACLE, CLOSED CELL FOAM, 2.75 X 2.75 X .06 THK	1
4	61	AJXXXXN6961335PC084	2	GASKET, RECEPTACLE, CLOSED CELL FOAM, 2.00 X 2.00 X .06 THK	1
4	62	AJXXXXN6961335PC085	2	ALARM, 4500 HZ, 120 VAC, 80 DB	1
4	63	AJXXXXN6961335PC086	2	RECEPTACLE CONNECTOR, SOCKET SHELL, SIZE 20-4S	1
4	64	AJXXXXN6961335PC087	2	RECEPTACLE CONNECTOR, SOCKET SHELL, SIZE 20-4SW, 45° KEYING	1
4	65	AJXXXXN6961335PC088	2	RECEPTACLE CONNECTOR, SOCKET SHELL, SIZE 20-4SY, 250° KEYING	2

4	66	AJXXXXN6961335PC089	2	RECEPTACLE CONNECTOR, SOCKET SHELL, SIZE 36-15S	1
4	67	AJXXXXN6961335PC090	2	RECEPTACLE CONNECTOR, SOCKET SHELL, SIZE 24-5S	1
4	68	AJXXXXN6961335PC091	2	RECEPTACLE CONNECTOR, SOCKET SHELL, SIZE 20-3S	1
4	69	AJXXXXN6961335PC092	2	HEX NUT, LOCKING, .164-32UNC-2B	5
4	70	AJXXXXN6961335PC093	2	MACHINE SCREW, ROUND HEAD, .112-40UNC-2A X .50 LG	20
4	71	AJXXXXN6961335PC094	2	HEX NUT, LOCKING, .112-40UNC -2B	20
4	72	AJXXXXN6961335PC095	2	MOUNTING BAR	2
4	73	AJXXXXN6961335PC096	2	CAP SCREW, HEX HEAD, .375-16UNC-2A X 1.50 LG	8
4	74	AJXXXXN6961335PC097	2	HEX NUT, LOCKING, .375-16UNC -2B	10
4	75	AJXXXXN6961335PC098	2	FUSE, MIDGET, 250 VOLTS, 2 AMP, TIME DELAY	1
4	76	AJXXXXN6961335PC099	2	DOOR STIFFENER, TOP	1
4	77	AJXXXXN6961335PC100	2	DOOR STIFFENER, BOTTOM	1
4	78	AJXXXXN6961335PC103	2	STUD, THREADED, .375-16UNC-2A X 2.00 LG	1
4	79	AJXXXXN6961335PC104	2	HEX NUT, WITH EXTERNAL TOOTH LOCK WASHER, .375-16UNC -2B	1
4	80	AJXXXXN6961335PC107	2	HEX NUT, LOCKING, .190-32UNF -2B	16
4	81	AJXXXXN6961335PC108	2	MACHINE SCREW, ROUND HEAD, .164-32UNC-2A X .50 LG	4
4	82	AJXXXXN6961335PC109	2	SEALING WASHER, Ø.190 NOMINAL	15
4	83	AJXXXXN6961335PC110	2	WASHER, FLAT, Ø.375 NOMINAL	8
4	84	AJXXXXN6961303AY091	2	CABLE ASSEMBLY, DISPLAY UNIT	1
4	85	AJXXXXN6961298PC001	2	EVENT COUNTER	1
4	86	AJXXXXN6961284PC001	2	MESSAGE DISPLAY UNIT	1
4	87	AJXXXXN6961335PC114	2	IEC REVERSING CONTACTOR	1
4	88	AJXXXXN6961335PC115	2	IEC NON-REVERSING CONTACTOR	1
4	89	AJXXXXN6961335PC116	2	FUSE, CLASS CC, 600 VOLTS, 2 AMP, TIME DELAY	3
4	90	AJXXXXN6961335PC117	2	TERMINAL BLOCK, SINGLE CIRCUIT, DIN RAIL MOUNT	10
4	91	AJXXXXN6961335PC118	2	END ANCHOR, DIN RAIL	6
4	94	AJXXXXN6961335PC119	2	FUSE BLOCK, DIN RAIL MOUNTED	17
4	95	AJXXXXN6961335PC120	2	MACHINE SCREW, ROUND HEAD, .190-32UNF-2A X .50 LG	19

4	96	AJXXXXN6961335PC121	2	DIN RAIL, SYMMETRICAL, 35mm X 7.5mm X 11.00 LG	1
4	97	AJXXXXN6961335PC122	2	POWER DISTRIBUTION BLOCK	1
4	98	AJXXXXN6961335PC123	2	DIN RAIL, SYMMETRICAL, 35mm X 7.5mm X 13.00 LG	1
4	99	AJXXXXN6961335PC124	2	DIN RAIL, SYMMETRICAL, 35mm X 7.5mm X 4.00 LG	1
4	100	AJXXXXN6961335PC125	2	END BARRIER, DIN RAIL	1
4	101	AJXXXXN6961335PC126	2	ENCLOSURE DOOR STOP	1

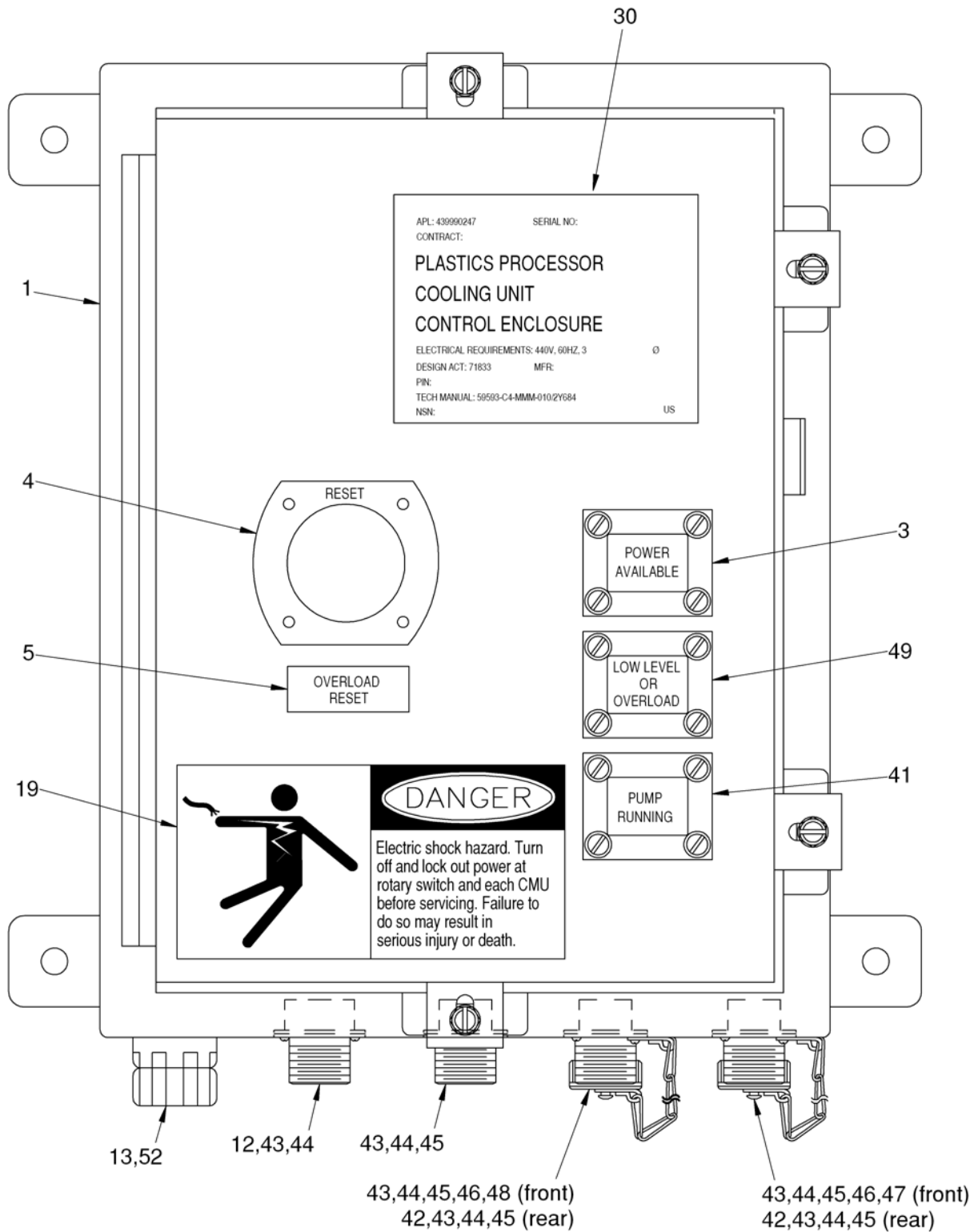


Figure 5. Cooling Unit Electrical Controller Assembly (sheet 1 of 2)

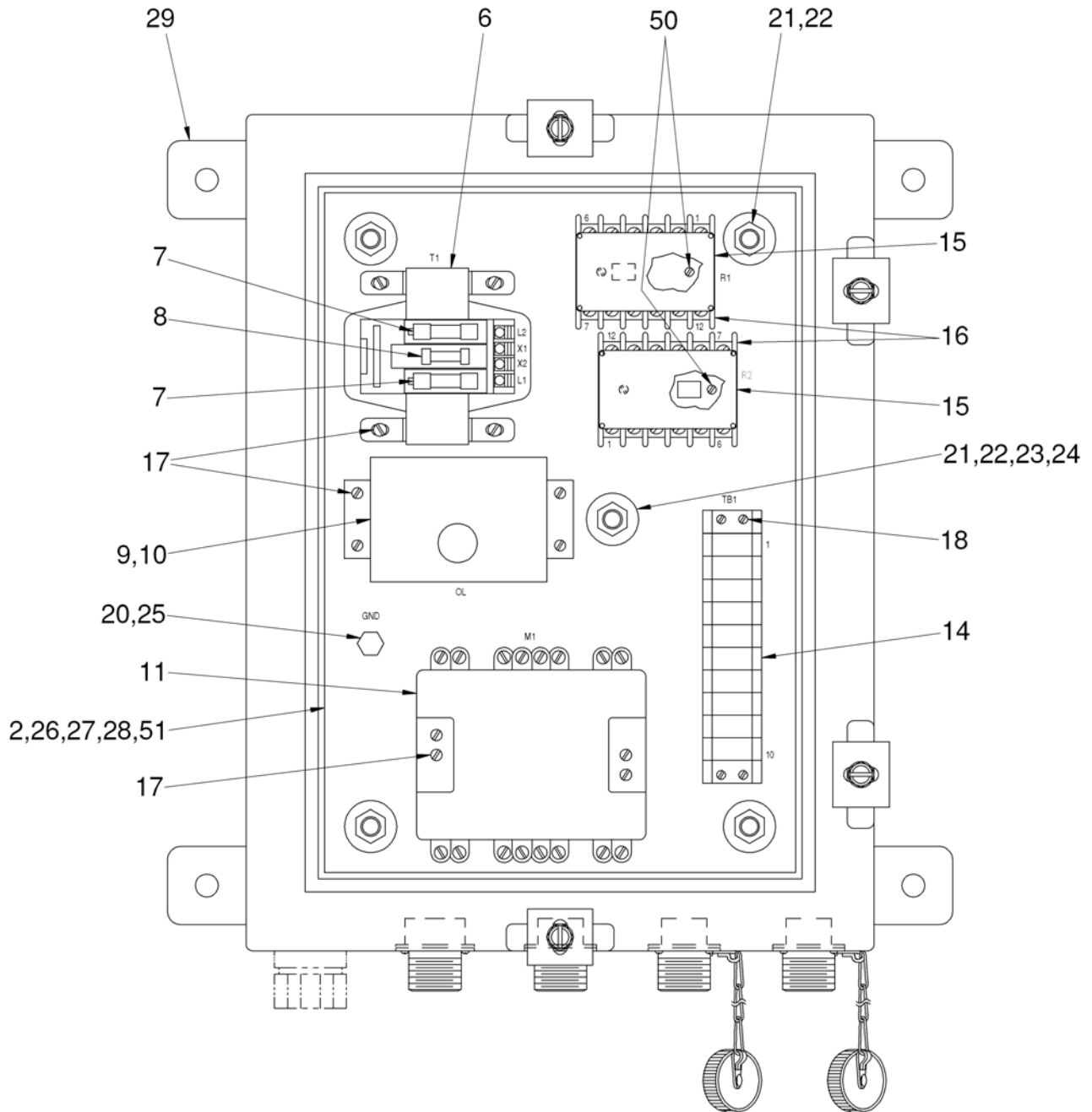


Figure 5. Cooling Unit Electrical Controller Assembly (sheet 2 of 2)

Cooling Electrical Enclosure Assembly

FIG. NO.	INDEX NO.	PART NUMBER	INDENT	DESCRIPTION	QTY PER ASSY
5	1	AJXXXXN6961315PC001	2	ENCLOSURE, 16" X 12" X 6"	1
5	2	AJXXXXN6961315PC002	2	PANEL, 13" x 9" x 14 GAUGE	1
5	3	AJXXXXN6961282PC001	2	INDICATOR, POWER AVAILABLE, WHITE	1
5	4	AJXXXXN6961304PC001	2	OVERLOAD RESET MECHANISM	1
5	5	AJXXXXN6961302PC011	2	NAMEPLATE, OVERLOAD RESET	1
5	6	AJXXXXN6961278PC001	2	TRANSFORMER W/FUSE BLOCK, 440-110 VAC, 60 Hz, 95 VA	1
5	7	AJXXXXN6961315PC007	2	FUSE, CLASS CC, 600 VOLTS, 1 AMP, TIME DELAY	2
5	8	AJXXXXN6961315PC008	2	FUSE, MIDGET, 250 VOLTS, 1 AMP, TIME DELAY	1
5	9	AJXXXXN6961315PC009	2	AC OVERLOAD RELAY, FORM C CONTACTS	1
5	10	AJXXXXN6961315PC010	2	HEATER COIL, 2 HP MOTOR	2
5	11	AJXXXXN6961315PC011	2	AC CONTACTOR, SIZE 1, N850	1
5	12	AJXXXXN6961315PC012	2	CLOSED CELL FOAM, 1.50 X 1.50 X .06 THK	1
5	13	AJXXXXN6961315PC013	2	PACKING ASSEMBLY, SIZE 2D	1
5	14	AJXXXXN6961315PC015	2	TERMINAL BOARD SCREW, TYPE 10 TERMINALS	1
5	15	AJXXXXN6961279PC001	2	RELAY, DPDT, 115 VAC, 10 AMP	2
5	16	AJXXXXN6961280PC001	2	RELAY SOCKET, 12 PIN, BOTTOM MOUNTED	2
5	17	AJXXXXN6961315PC018	2	MACHINE SCREW, ROUND HEAD, .190-32UNC-2A X .75 LG	2
5	18	AJXXXXN6961315PC019	2	MACHINE SCREW, ROUND HEAD, .164-32UNC-2A X .75 LG	12
5	19	AJXXXXN6961302PC023	2	ELECTRICAL HAZARD PLATE	1
5	20	AJXXXXN6961315PC021	2	CAP SCREW, HEX HEAD, .250-20UNC-2A X .50 LG	3
5	21	AJXXXXN6961315PC022	2	HEX NUT, ELASTIC LOCKING, .375-16UNC-B	5
5	22	AJXXXXN6961315PC023	2	WASHER, Ø.375, TYPE 'B' PLAIN	5
5	23	AJXXXXN6961315PC024	2	CAP SCREW, HEX HEAD, .375-16UNC-2A X 2.00 LG	1
5	24	AJXXXXN6961315PC025	2	SPACER, TUBING .750 O.D. X .12 WALL X 1.00 LG	1

5	25	AJXXXXN6961315PC026	2	HEX NUT, ELASTIC LOCKING, .250-20UNC-B	2
5	26	AJXXXXN6961315PC028	2	INSERT, .164-32UNC-2B	4
5	27	AJXXXXN6961315PC029	2	INSERT, .250-20UNC-2B	1
5	28	AJXXXXN6961315PC030	2	INSERT, .190-32UNC-2B	12
5	29	AJXXXXN6961315PC031	2	MOUNTING BAR	2
5	30	AJXXXXN6961302PC016	2	NAMEPLATE, COOLING UNIT	1
5	31	AJXXXXN6961315PC033	2	TERMINAL, RING TONGUE, INSULATED, 16-14 AWG, #10 STUD	A/R
5	32	AJXXXXN6961315PC034	2	TERMINAL, RING TONGUE, INSULATED, 16-14 AWG, .25 STUD	A/R
5	33	AJXXXXN6961315PC035	2	WIRE, HOOK UP, 14 AWG, WHITE	A/R
5	34	AJXXXXN6961315PC037	2	CABLE TIE, 7.0 LG X .18 WIDE	A/R
5	35	AJXXXXN6961315PC038	2	CABLE TIE, 5.0 LG X .18 WIDE	A/R
5	36	AJXXXXN6961315PC039	2	TERMINAL, RING TONGUE, INSULATED, 16-14 AWG, #8 STUD	A/R
5	37	AJXXXXN6961315PC041	2	CABLE TIE BASE, ADHESIVE BACK, 1" SQUARE	A/R
5	38	AJXXXXN6961315PC042	2	SPIRAL WRAP, .25 O.D.	A/R
5	39	AJXXXXN6961315PC043	2	TERMINAL, RING TONGUE, INSULATED, 16-14 AWG, #6 STUD	A/R
5	40	AJXXXXN6961315PC044	2	MARKER SLEEVE, HEAT SHRINKABLE, WHITE, .187 I.D. X 1.50 LG	A/R
5	41	AJXXXXN6961306PC001	2	INDICATOR, PUMP RUNNING, GREEN, 110 VAC	1
5	42	AJXXXXN6961315PC046	2	RECEPTACLE, CONNECTOR, 2 PIN, SHELL SIZE 16-11	2
5	43	AJXXXXN6961315PC047	2	MACHINE SCREW, ROUND HEAD, .112-40UNC-2A X .50 LG	24
5	44	AJXXXXN6961315PC048	2	HEX NUT, ELASTIC LOCKING, .112-40UNC-B	24
5	45	AJXXXXN6961315PC049	2	CLOSED CELL FOAM, 1.38 X 1.38 X .06 THK	5
5	46	AJXXXXN6961315PC050	2	PROTECTIVE CAP, SHELL SIZE 16, BLK, WITH SASH CHAIN	2
5	47	AJXXXXN6961315PC051	2	RECEPTACLE, CONNECTOR, 2 PIN, SHELL SIZE 16-11W, 35° KEYING	1
5	48	AJXXXXN6961315PC052	2	RECEPTACLE, CONNECTOR, 2 PIN, SHELL SIZE 16-11X, 110° KEYING	1
5	49	AJXXXXN6961281PC001	2	INDICATOR, LOW LEVEL OR OVERLOAD, RED, 110 VAC	1
5	50	AJXXXXN6961315PC054	2	MACHINE SCREW, ROUND HEAD, .138-32UNC-2A X .75 LG	4
5	51	AJXXXXN6961315PC055	2	INSERT, .138-32UNC-2B	4
5	52	AJXXXXN6961315PC057	2	STUFFING TUBE, SIZE 2, STRAIGHT	1