



EXPLORANIUM® ST-20 Radiation Portal Monitor

Sensitive, accurate and fast – for security and commerce



The ST-20 RPM identifies nuclear material in cargo containers, trucks and other vehicles in the normal flow of checkpoint traffic.

The challenge: scanning vehicles and cargo for nuclear material without slowing the flow of traffic. The solution: the EXPLORANIUM ST-20 spectroscopic RPM.

The ST-20 RPM identifies and locates nuclear material in cargo containers, trucks and other vehicles in the normal flow of checkpoint traffic. By quickly distinguishing potential nuclear weapons material from likely benign sources, the ST-20 RPM can greatly reduce the need for manual inspections.

The ST-20 RPM meets the challenging ANSI N42.38-2006 nuclide identification and sensitivity standards for spectroscopic RPMs. In a single scan, the ST-20 RPM can sense extremely low levels of gamma and neutron radiation – with a false-alarm rate better than 1:10,000 – and identify a wide variety of nuclides. Combining this outstanding performance with high throughput and efficient operation, the ST-20 RPM is ideal for border crossings, ports and other transit facilities.



The ST-20 identifies and locates SNM and other nuclear material, even when shielded or masked.

Focus on nuclear weapons

The ST-20 is designed to scan for special nuclear material (SNM) that could be used to create a nuclear weapon, and for commercial sources that could be used in a "dirty bomb." In compliance with the ANSI N42.38-2006 standard, the ST-20 identifies these materials even when they are heavily shielded or masked, and distinguishes SNM from medical isotopes.

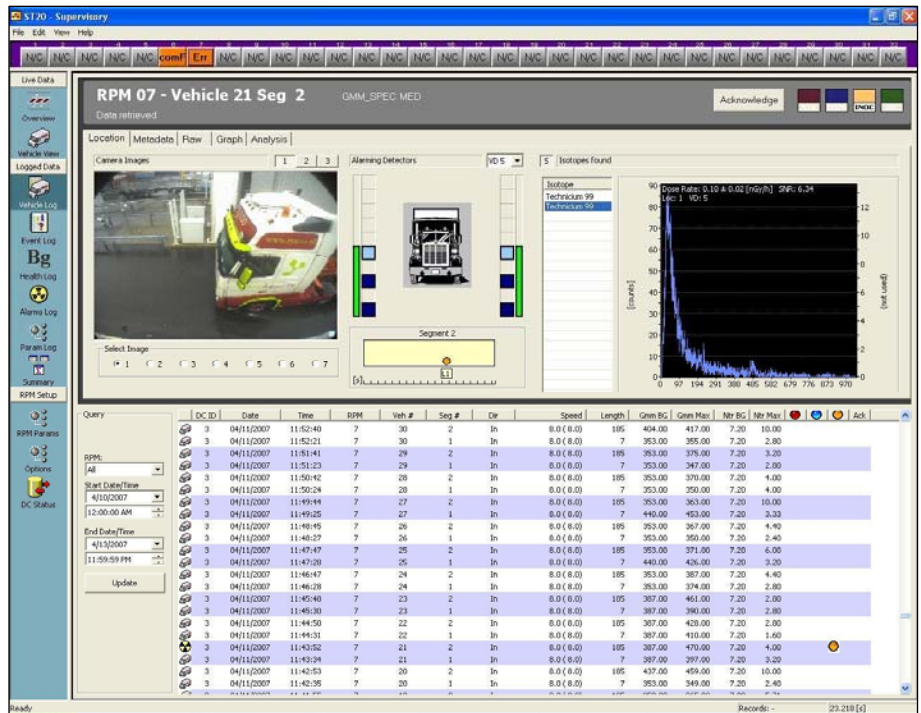
Practical operation

The ST-20 RPM can greatly reduce manual inspections by distinguishing potential weapon material from likely benign sources, and can speed up manual inspections by showing the location of radioactive sources within the vehicle.

To help keep traffic flowing, the ST-20 RPM can scan vehicles in the normal flow of traffic at gates or other checkpoints. A single ST-20 supervisor workstation can control up to 32 RPMs. Easy-to-use operator software provides alarms, scanning displays, radiation measurements, vehicle images and more. Scanning data and images are integrated in the system database for easy access.

Key features

- Meets challenging ANSI performance standards
- Highly sensitive, with a false alarm rate better than 1:10,000
- Scans vehicles in the flow of checkpoint traffic
- Identifies SNM even when shielded or masked
- Reduces the need for manual inspections
- Network capability for centralized control



The ST-20 Supervisor Station provides alarms, scanning displays, radiation measurements and vehicle images from 32 RPMs, all in real time.

SAIC Security and Transportation Technology

10260 Campus Point Drive, V2-F | San Diego, CA 92121

866.SAF.TRAN (866.723.8726) | sectrans@saic.com

Visit us online at www.saic.com/security

Energy | Environment | National Security | Health | Critical Infrastructure



© Science Applications International Corporation. All rights reserved. EXPLORANUM, SAIC, the SAIC Logo and "From Science to Solutions" are trademarks or registered trademarks of Science Applications International Corporation in the United States or other countries. The ST-20 system and its technology are subject to U.S. Export Administration regulations. Diversion contrary to U.S. law is prohibited. This technology may not be exported, re-exported, resold, transferred or transshipped without prior authorization by the U.S. government. TPN 09-0207 10Feb10