



## Railroad VACIS® gamma-ray imaging system

Rugged, around-the-clock nonintrusive imaging for rail applications



**The Railroad VACIS system scans closed, moving railcars.**

SAIC's Railroad VACIS imaging system helps trained operators see the contents of closed, moving railcars, assisting them in intercepting weapons, contraband, and other items of interest and verifying shipping manifests.

The Railroad VACIS system can scan trains of any length as the railcars move between the system's gamma source and detectors. The system's dose per scan is extremely low, enhancing safety for drivers, operators, and bystanders. The system's rugged design resists corrosion, humidity, rain, and wind, making it an ideal choice for around-the-clock scanning in challenging environments such as remote border crossings.

Featuring rugged gamma-ray imaging technology proven in hundreds of VACIS systems installed around the globe, the Railroad VACIS system is an ideal imaging solution for border crossings or wherever nonintrusive imaging of rail equipment is required.



**The Railroad VACIS system is designed to scan day and night in remote, challenging installation environments.**

### **Complete nonintrusive imaging**

The Railroad VACIS imaging system scans trains of any length. As the railcars move through the system without stopping, their images are individually saved along with a high-resolution digital video snapshot of the car identification number. Coupling sensors automatically identify the beginning and end of each railcar, allowing segmentation of the train into individual railcar images. Speed sensors mounted on tracks allow for constant aspect ratio in images despite changes in train speed.

### **Focus on safety**

SAIC's patented detector technology allows trained inspectors see the contents of closed railcars through more than five inches of steel. The system's direct radiation dose per scan to cargo is extremely low — a thousand times less than a dental x-ray — and the scatter dose to locomotive occupants, operators, and bystanders (who are never scanned directly) is even lower.

### **SAIC — a world leader**

SAIC is a world leader in nonintrusive imaging technology, with hundreds of systems installed for government and commercial clients around the world. Every VACIS system is backed by SAIC's dedicated installation, training, maintenance and technical support.

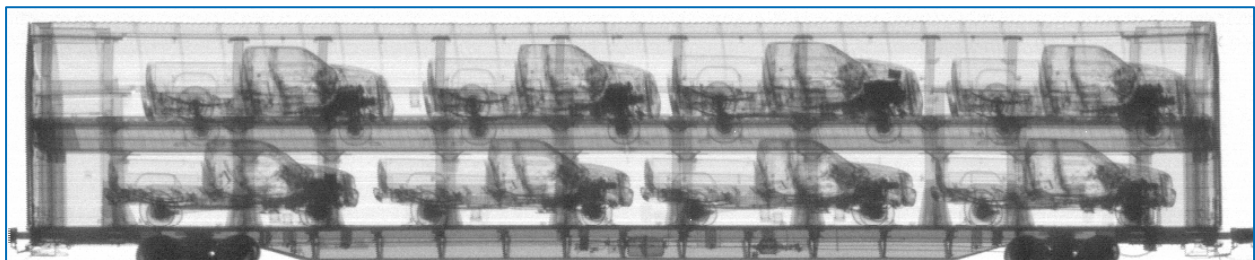
#### **Capabilities:**

- Scans moving trains of any length
- Extremely low radiation dose enhances safety for operators and bystanders
- Penetrates over five inches of steel
- Rugged design resists corrosion, humidity, and rain
- Scans day and night, around the clock

#### **Options:**

- Operator booth

**The Railroad VACIS system provides images of railcar contents through more than five inches of steel.**



#### **SAIC Security and Transportation Technology**

2985 Scott Street | Vista, CA 92081

866.SAF.TRAN (866.723.8726) | [sectrans@saic.com](mailto:sectrans@saic.com)

Visit us online at [www.saic.com/security](http://www.saic.com/security)

Energy | Environment | National Security | Health | Critical Infrastructure



© 2009 Science Applications International Corporation. All rights reserved. VACIS, SAIC, the SAIC Logo and "From Science to Solutions" are trademarks or registered trademarks of Science Applications International Corporation in the United States or other countries. VACIS systems and their technologies are subject to U.S. Export Administration regulations. Diversion contrary to U.S. law is prohibited. These technologies may not be exported, re-exported, resold, transferred or transhipped without prior authorization by the U.S. government. TPN 09-0155 06Jan09