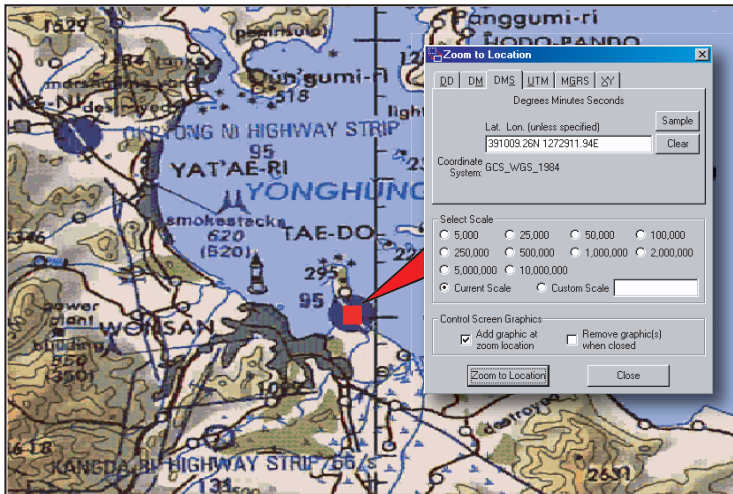


# Coordinate Viewer and Zoom Tools



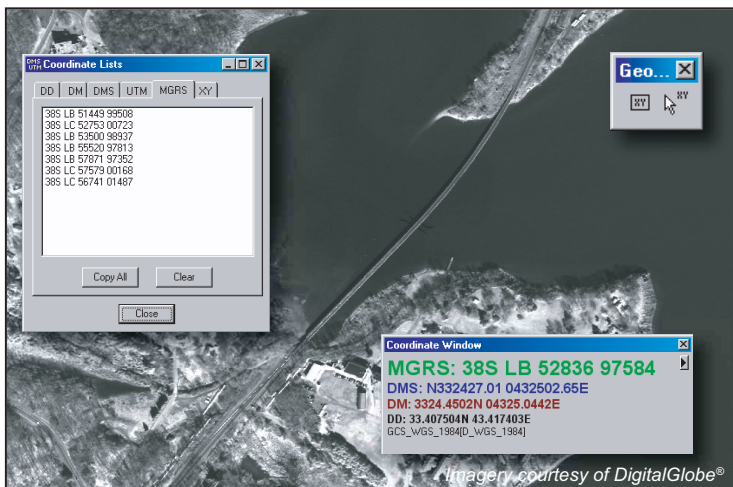
The GeoRover® Coordinate Viewer and Zoom Tools extensions are developed by SAIC to work with the commercial ESRI® ArcGIS® Desktop software (ArcView®, ArcEditor™, or ArcInfo®). The extensions load as toolbars into the ArcMap™ component of ArcGIS, providing rapid map zooming and enhanced coordinate functionality. Capabilities include flexible and robust coordinate parsing and searching, real-time coordinate display, and the ability to retrieve coordinates from the map.



▲ The Zoom Tools extension "Zoom to Location" function will pan the map display to a specified coordinate location while zooming to a pre-defined or custom scale. A graphic can be added at zoom location to allow for easy identification. This tool can work with six different coordinate formats and hundreds of different coordinate structures.

## Features

- ▶ Viewing window simultaneously displays up to six different coordinate system formats in real-time, based on cursor position, regardless of which ArcMap tool is being used
- ▶ Zoom to any scale and/or known specific coordinate location
- ▶ Interface performs instant coordinate conversion between all supported coordinate formats: Decimal Degrees (DD), Degrees Decimal Minutes (DM), Degrees Minutes Seconds (DMS), Universal Transverse Mercator (UTM), Military Grid Reference System (MGRS), and XY
- ▶ Options allow for user preferred coordinate format (structure) and display style (font, size, color)
- ▶ Copy any individual coordinate from map to clipboard with single-click or use coordinate lists tool to copy multiple coordinates
- ▶ Viewing window is resizable and can be docked to the ArcMap interface



▲ The Coordinate Viewer extension "Coordinate Window" simultaneously displays six different coordinate system formats, optionally including datum information, in real-time; display style and coordinate structure are completely customizable. Rapidly copy multiple coordinate values to the system clipboard by adding to the Coordinate Lists window.

## Benefits

- ▶ Supports six different coordinate formats and any ArcGIS projection/datum
- ▶ Coordinate parsing functionality increases productivity by accepting and outputting greater range of disparate coordinate formats
- ▶ Includes embedded commands for full customization of ArcMap template
- ▶ Coordinate list tool "batch" copying capability provides fastest possible means to export multiple coordinates from map to clipboard

GeoRover Coordinate Viewer and Zoom Tools extensions are included with the purchase of any GeoRover product



Copyright© 2007 SAIC. All rights reserved. GeoRover and the SAIC logo are trademarks of Science Applications International Corporation in the United States and/or other countries. ESRI, ArcGIS, ArcMap, ArcView, ArcEditor, ArcInfo and the ESRI logo are trademarks or registered trademarks of Environmental Systems Research Institute in the United States, the European community, or certain other jurisdictions. DigitalGlobe is a registered trademark of DigitalGlobe, Inc. in the United States and/or other countries.

