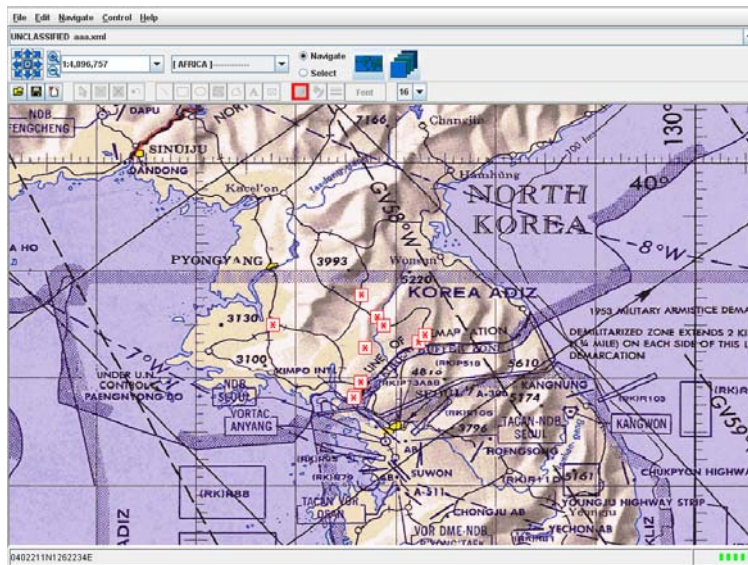




Map Viewer

A Geospatial Viewer



Map with Overlay

Pathfinder Map Viewer

The Pathfinder Map Viewer is a mapping system for plotting geographical coordinates obtained from records returned by the Pathfinder Tools. A variety of common map formats are supported, including National Geospatial-Intelligence Agency (NGA) standard map data, Compressed ARC Digitized Raster Graphics (CADRG), Controlled Image Base (CIB), and Digital Terrain Elevation Data (DTED) source maps.

The Map Viewer is used to view overlay files created with the GeoPlotEntities tool. Links back to the source documents are available for each plot symbol in the Map Viewer Tool. Rectangular area searches against Pathfinder data may also be launched from within the Map Viewer. Utilities are included to navigate to any geographical coordinate (latitude and longitude). A zoom feature quickly provides the desired scale. Projection options include Mercator, Orthographic, and Gnomonic projections.

For more information

tel: 1.877.283.3911

Visit us online at www.saic.com/products/software/pathfinder

Energy | Environment | National Security | Health | Critical Infrastructure

