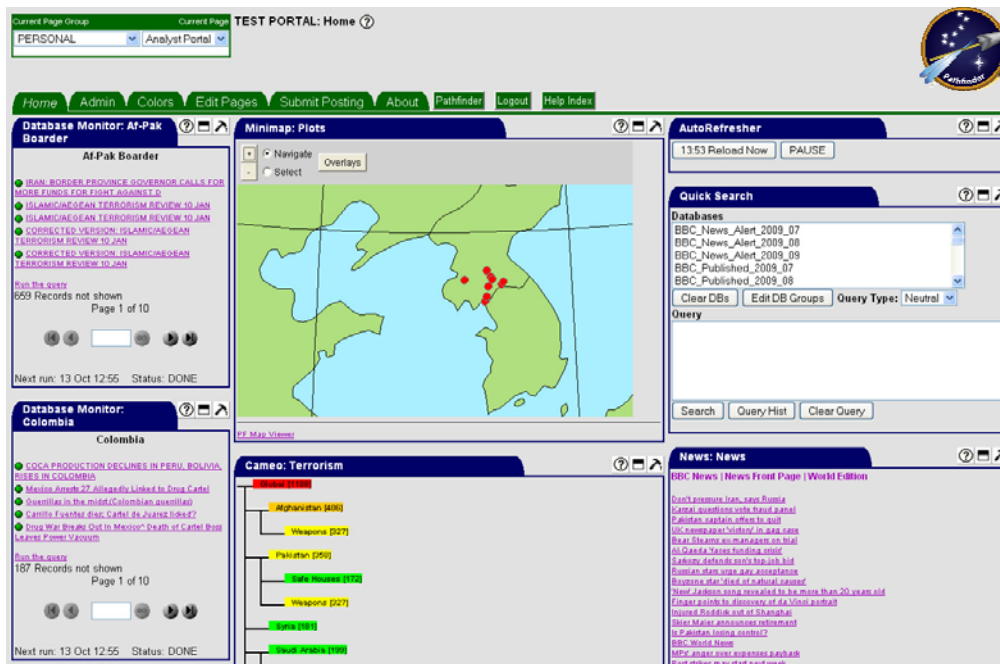




Analyst Portal

Managing Analysts' Workload



The Analyst Portal

The Analyst Portal is a user interface designed to simplify analyst workload. It provides a customizable, task-focused web browser window displaying a variety of tools. These tools are adapted from the Pathfinder suite and are typically simplified or “lite” versions designed to minimize bandwidth for faster response over slow or busy lines.

Analysts may define multiple pages, each fully customizable as to color, style, number and location of tools. Tools include Database Monitors, viewers for PIM and Cameo, a MiniMap, and a “quick search” function allowing for ad hoc queries. Community services such as a bulletin board, polls, and links are also available.

The Database Monitor is the most used of the portal tools. It provides a window on streaming data by executing queries at a defined interval with results aggregated into a list of titles similar to a headline service. Each record is viewable using the Pathfinder Results window.

Results containing geographical (map) coordinates can be automatically routed to a MiniMap viewer that correctly locates each record on the appropriate map. These icons are linked, via a Results window, back to the original record.

The viewers for PIM and Cameo allow for viewing and storing of appropriate records. These models can be shared by individuals or groups. Model properties may be set by the owner and allow for fine-grained access control to the elements of each model. These features, including model creation and editing, are only available from the full versions of these tools in the Pathfinder tool suite. The tool suite is available from the portal from the menu bar.

For more information

tel: 1.877.283.3911

Visit us online at www.saic.com/products/software/pathfinder

Energy | Environment | National Security | Health | Critical Infrastructure

